

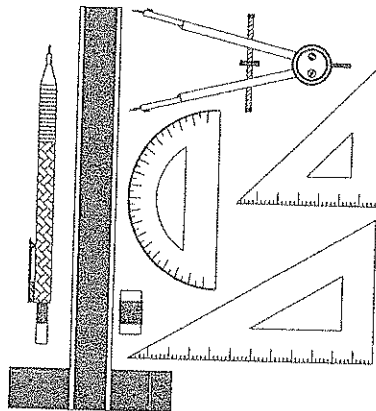
# HILLCREST HIGH SCHOOL NOVEMBER EXAMINATION ENGINEERING, GRAPHICS & DESIGN

GRADE 10  
2013  
PAPER 2

**MARKS: 100 TIME: 2 HOURS**

**INSTRUCTIONS TO CANDIDATES**

1. This question paper consists of 4 pages including the cover page and 3 questions.
2. All questions must be answered.
3. Unless specified otherwise, all questions are in Third Angle Orthographic Projection.
4. Unless specified otherwise, all questions are to be completed to a scale of 1:1.
5. All answer sheets must be re-stapled in numerical order, even questions that are not attempted/blank.
6. All construction work must be shown, even if a stencil was used.
7. Print your NAME neatly on each page.
8. Use only the drawing sheets provided.
9. Your drawings should reflect neatness and accuracy.
10. All dimensions or detail not given may be assumed in good proportion.



QUESTION	SECTION	MARK	MAXIMUM
1	ISOMETRIC PROJECTION		25
2	PERSPECTIVE		25
3	MECHANICAL CASTING		50
TOTAL			100
SYMBOL			

NAME

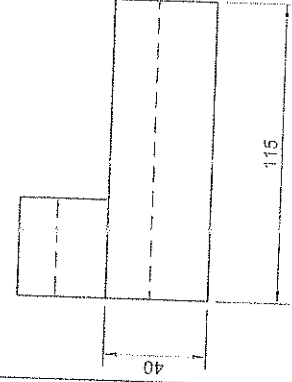
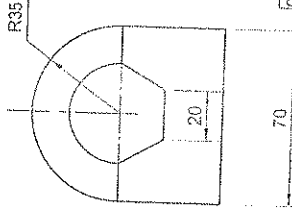
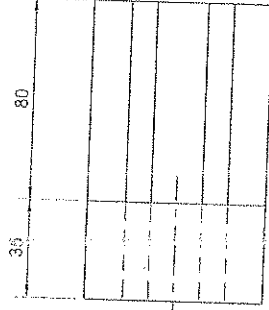
NOVEMBER 2013  
 GRADE 10 P2  
 QUESTION 1  
 25 MARKS  
 ISOMETRIC

**QUESTION 1**

The figure shows the front view, top view and right view of a CASTING in 3rd angle orthographic projection.

Draw a neat isometric projection view of the CASTING.

- Show all construction and centre lines



**ASSESSMENT CRITERIA**  
 You will be assessed on the following abilities:

- draw the centre lines 1
- draw the isometric view 15
- draw the isometric arcs 7
- draw the hexagon construction 1
- position the isometric view correctly 1

cls	1	pts	15	arcs	7	hex	1	pos	1	Tot	25
-----	---	-----	----	------	---	-----	---	-----	---	-----	----

NAME \_\_\_\_\_

ANSWER SHEET 1

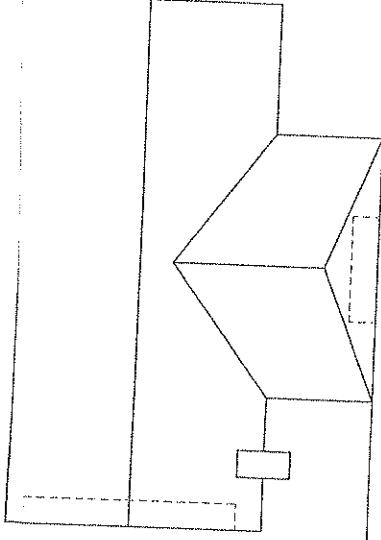
NOVEMBER 2013  
GRADE 10 PE

QUESTION 2

ONE POINT  
PERSPECTIVE

The figure below shows the views of a dwelling.  
 Draw a neat ONE POINT PERSPECTIVE drawing of the dwelling.  
 Show all construction.  
 Label the vanishing point.  
 Do not show any hidden detail.

- ASSESSMENT CRITERIA**
- You will be assessed on your ability to do the following:
- project from top view to station point 2
  - determine the vanishing point 1
  - project to the vanishing points 2
  - draw the two point perspective 20



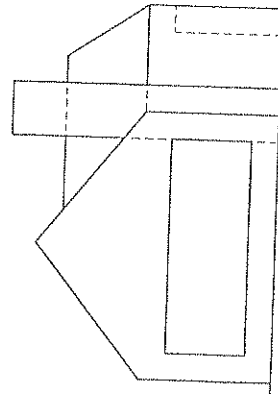
PP

HL

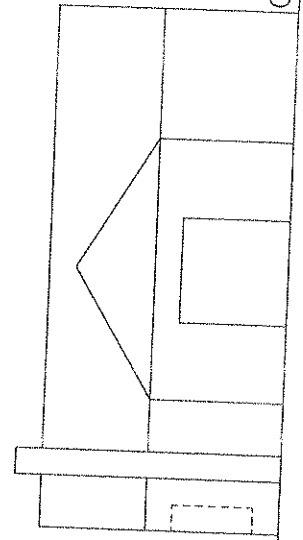
PP

HL

SP +



GL



GL

NAME

ANSWER SHEET 2

