

HILLCREST HIGH SCHOOL
UKUHLOLWA KUKAJUNI 2014
ISIZULU ULIMI LOKUQALA LOKWENGEZELELA
IBANGA LESHUMI (GRADE 10) IPHEPHA LOKUQALA (PAPER 1)

MOTHER TONGUE SPEAKERS ONLY

ISIKHATHI: 2 AMAHORA

AMAMAKI: 80

IMIYALELO KOHLOLWAYO

- Fundisisa lonke iphepha ngaphambi kokuba uphendule.
- Landela imiyalelo oyinikiwe yombuzo ngamunye.
- Ungayixovi imibuzo.
- Phendula ngesiZulu esihle nopolomagama olwamukelekile.
- Bhala umsebenzi ohlanzekile.

1. Finda indaba elandelayo bese uphendula imibuzo oyinikiwe NGEMISHO EPHELELE.

Esikoleni esincane

Igama lani uMthembeni Mthethwa ngangifunda eThekwini Primary. Kwakuyisikole esihle. Ngangijabula khona. Nganginabangani abaningi. Sasidlala ibhola enkundleni yemidlalo njalo ngekhefu. Abanye othisha bethu babenomusa. Abanye benolaka.

Igama lami uMthembeni Mthethwa ngihlala ngangifunda eThekwini Primary. Kwakuyisikole esihle. Ngangijabula khona. Nganginabangani abaningi. Sasidlala ibhola enkundleni yemidlalo njalo ngekhefu. Abanye othisha bethu babenomusa. Abanye benolaka.

Ngan githanda uthisha wami uMisi Duncan kakhulu. Wayemuhle uMisi Duncan futhi wayenomusa. Wayegqoka izingubo ezinhle zikanokusho zonke izinsuku. NgePhasikawayesithengela amaqanda angushokoleti. Ngangizimisela kakhulu ekilasini lakhe. Omunye uthisha wethu umnumzane Brady wayefundisa imidlalo. Kwakufanele ukuba sibhukude kakhulu ehlobo. Emva kwekilasi lokubhukuda ngangikhatshala. Ngangimesaba impela. Wayethanda ukusithethisa ngaso sonke isikhathi. Omunye uthisha wethu wayeyisikhohlwa impela. Wayekhohlwa amagama ethu zonke izinsuku. Abafundi babedlala ngaye ngokumtshela amagama amasha onke amasonto. Omunye uthisha wethu wayemuhle impela. Wayezimisele ngezingubo zakhe kakhulu. Sonke sasifisa ukuba nezingubo ezifana nezakhe.

Mina ngangimfishane kunabanye abafundi ekilasini. UBhengu yena wayemude. Abafundi ekilasini babengiphatha kahle. Omunye umfundi wayenamasamishi amnandi kakhulu futhi wayenamantongomane zonke izinsuku kanye nezithelo namashiBusi. Mina nganginamasamishi e-Marmite kuphela zonke izinsuku. Kwakukhona i-Tuck shop esikoleni sethu. Ngangithanda ukuthenga osamusa khona. Abafundi babechitha imali eningi e-Tuck Shop. Ama-Chelsea buns akhona ayemnandi impela.

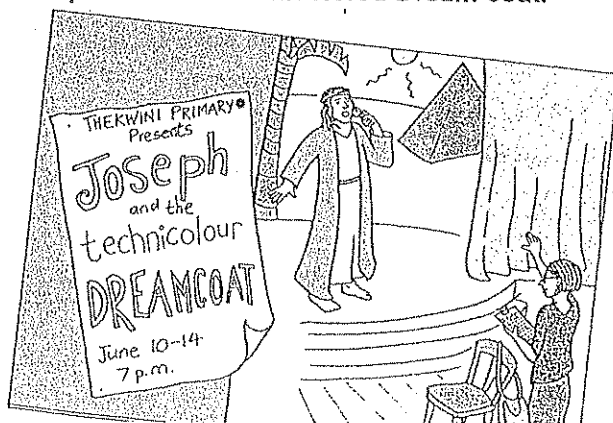
Ntambama sasinamathuba amaningi okudlala imidlalo ehlukene. Amantombazane ayethanda ukudlala i-Netball ne-Hockey. UTrisha wayengumpetha we-hockey. Waphumelela ukudlala iqembu i-Durban and Districts kanye ne SA under 11. Yayinesibindi leyo ntombazane. UMandla yena wayegijima ngejubane / ngesivivini esimangalisayo. Sasiba nosuku lwemidlalo njalo ngoSeptemba. UMandla wayewina njalo amabanga onke, i-100metres, ne-800 metres ne1,200 metres. Sengathi wayethole umfundaze wokufunda e High School. Yena wayeyiqhawe lesikole.

Omunye umfundi owayethandwa kakhulu kwakunguSteven. Yena wayekwazi ukubhukuda njengenhlanzi. Wayemela isikole emincintiswaneni yokubhukuda futhi wayemela i-Durban and Districts iminyaka yonke. Wayenezindebe eziningi impela futhi wayenomzimba oqinile.

Umfana ohlakaniphile kunabo bonke abanye abafana kwakunguChris. Wayekhuthele kakhulu. Wayethola njalo u-90percent noma phezu kwalokho ezivivinyweni zezibalo. Ngangifisa kakhulu ukuphumelela njengaye ezivivinyweni zezibalo.

Kwakumnandi eThekwini Primary ngoba umsebenzi wesikole wawungemningi. Sasithola amathuba amaningi okudlala futhi sasenza izinto ezinhle. Sasinomdlalo wesiteji iminyaka yonke. Ngomunye unyaka mina ngangidlala umlingiswa oqavile impela. NganginguJoseph emdlalweni "Joseph and the Technicolored Dream coat."

Kwakufanele ukuba ngicule futhi kwakufanele ukuba sidanse. Kwakuhamba kahle kakhulu. Bonke abazali bethu babencoma lowo mdlalo. Wawunesasasa. Sekufanele sisebenze kakhulu eHigh School. Asisenawo amathuba amaningi okudlala futhi umsebenzi awulula neze. Kwakukuhle kakhulu esikoleni esincane eThekwini Primary. Ngizokhumbula lezo zinsuku njalo. Ngangijabula impela khona.



Imibuzo

- 1.1 Ubani igama nesibongo sokhuluma lapha? (1)
- 1.2 Ubizwa ngokuthini igama lesikole afunda kuso? (1)
- 1.3 Yni ayeyenza njalo ngekhefu enkundleni yezemidlalo? (1)
- 1.4 Ymuphi uthisha ayemuthanda kakhulu uMthembeni esikoleni sakhe? (1)
- 1.5 Yni eyayenza uMthembeni athande kakhulu lo Misi ombhale ngenhla? (2)
- 1.6 Ubani uthisha owayefundisa imidlalo kulesi sikole? (1)
- 1.7 UMthembeni wayephatha ukudla okunjani? (1)
- 1.8 Bala imidlalo emibili eyayithandwa ngamantombazane kulesi sikole? (2)
- 1.9 Ubani owayeyiqhawe emidlalweni yokugijima? (1)
- 1.10 Yini eyenza lo ombhale ngenhla uthi wayeyiqhawe? (2)
- 1.11 Phendula le mibuzo elandelayo ngokuthi IQINISO noma IPHUTHA
- 1.11.1 UMthembeni wayehlakaniphe kunabo bonke esikoleni. (1)
- 1.11.2 UMthembeni ufunda eThekwini Primary. (1)
- 1.11.3 Isikole iThekwini Primary siseMpumalanga Province. (1)
- 1.11.4 USteven wayekwazi ukubhukuda njengenhlazi. (1)
- 1.12 Wena yimiphi imidlalo emibili oyenza noma ofisa ukuyenza esikoleni sakho (2)
- 1.13 Ubani isibongo sikathishomkhulu wesikole ofunda kuso manje? (1)

[20]

ISIQEPHU B

2. Funda uphinde ubuke lesi sikhangisi esilandelayo bese uphendula imibuzo ngemisho ePHELELE.

ROYAL BAKING POWDER

U-ROYAL BAKING POWDER UGUBHA IMINYAKA ENGU-150 KULONYAKA.

Ukugubha leminyaka, u-Royal Baking Powder uphisa ngamahempha okubalwa kuwo ama-Japopot, Kenwood Chefs kanye nemikhinqizo yakwa-Royal Baking Powder. Konke lokhu bakwenzela ukubonga omama basehlangizimu Afrika ngobubaxhasa nokuthembela kubo kuyo yonke leminyaka.

ZIBEKE ETHUBENI LOKUWINA LAMAHEMPA NGOKUTHUMELA IGAMA ELITHI "ROYAL" KU 33963. I-SMS IBIZA U-R1,50 IYINYE.

BOLOZWE

- 2.1 Lesi sikhangisi sivele kuliphi iphephandaba? (1)
- 2.2 Ubani igama lenkampani eyenze lo mncintiswano? (1)
- 2.3 Abakwa-Royal baking powder bagubha iminyaka emingaki? (1)
- 2.4 Inkampani yakwa-Royal yaqala ngamuphi unyaka? (1)
- 2.5 Bala izinto ezintathu abakwaRoyal Baking Powder abaphisana ngazo. (3)
- 2.6 Ungawungenela kanjani lo mncintiswano ukuze uzibeke ethubeni lokuwina? (1)
- 2.7 Ibiza malini i-sms eyodwa oyikhokha uma ungenela lo mncintiswano? (1)
- 2.8 Phendula le mibuzo elandelayo ngokuthi Yebo noma Cha.
- 2.81 Lo mncintiswano owokubonga omama. (1)
- 2.82 Umuntu ohlala eBotswana angawungenela lo mncintiswano. (1)
- 2.83 Inombolo onga-sms kuyo u-33693. (1)

[11]



Clientele
FUNERAL DIGNITY PLAN

SMSa u PLAN ku
49225

(SMS Ibiza imali aywayelekile)

www.clientele.co.za
Kunengomsebenzisa
Orange Life njabahlizakubizimabasemigalweni

Thola umasingewabisane kusukela

ku R90 ngenyanga!




- Uzokhokhelwa phakathi kwamahora angu 24
- Ungakwazi ukuvikela amalungu angu 13 kumasingwabisane munye
- Uthola i-airtime ka R200 mahhala uma ufaka i-claim
- Uphinde uthole imali yosizo kwizindleko zokudla kanye neyokuvulwa kwetshe
- i-Cover yomndeni: Umndeni wama lungu angu 5 ungakhokhelwa imali engaphezulu kuka R50,000 kusukela kwini elingaphansi kuka R1. ngosuku

- 2.9 Kulesi sikhangisi kukhangiswani? (1)
- 2.10 Ubiza kusukela kumalini lo masigwabisane ngenyanga? (1)
- 2.11 Mangaki amalunga omndeni ongakwazi ukuwavikela? (1)
- 2.12 Obani laba ababili abavezwe kulesi sikhangisi? (2)
- 2.13 Ithini iwebhusayithi yakwaClientele? (1)
- 2.14 Lithini igama oli-sms uma ufuna ukujoyina lo masigwabisane? (1)

[7]

3. Funda indaba elandelayo bese uyifingqa ngamphuzu (7 points) ayisikhombisa noma amagama angamashumi ama- 30.

- Bhala amaphuzu ayisikhombisa.
- Imisho yakho mayibe nezinombolo kusukela ku-1 kuya ku-7
- Bhala iphuzu elifodwa emshweni .
- Sebenzisa amagama akho emshweni.
- Ekugcineni kwamaphuzu wonke owabhalile bhala inani lamagama owasebenzisile

Abantu sebencamela ugesi wekhadi kuleli

INTATHELI YESOLEZWE

UKWENYUKA njalo kwentengo kagesi sekwenze abaningi bashintshela ekusebenziseni ugesi wekhadi.

Lokhu kuvezwe nguNksz Manion Hughes oyiGeneral Manager yakwa-Eskom.

Ubekhuluma izolo eriqungqutheleni yeConsumer Goods Council of SA, eGoli.

UNksz Hughes uthe abantu abasakwazi ukumelana nezindleko zikagesi nokuyi- ngakho bencamela owekhadi obonakala ungcono ukubiza.

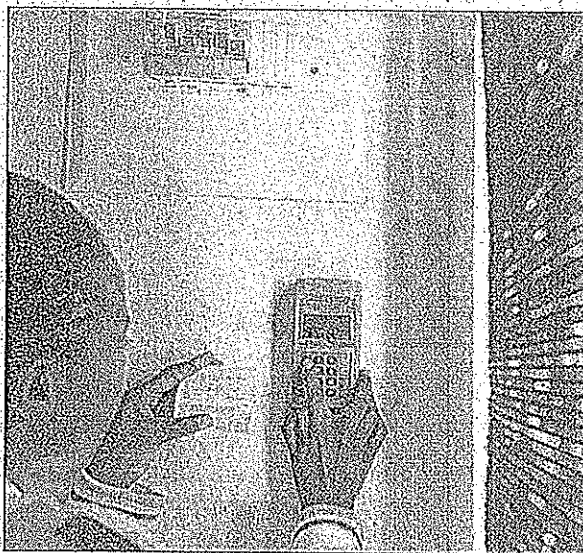
“Abanikazi bezindlu sebencamela ugesi wekhadi ngoba bayakwazi

ukuwusebenzisa ngokuzikalela futhi ungadluli emthamweni wezindleko zabo zenyanga.

Bakhathele wukukhathazeka ngokuthi ugesi uzobiza malini ekupheleni kwenyanga uma sekufika incwadi kagesi,” ku chaza yena.

Uveze ukuthi bangaphezu kwamaphesenti angu-90 abasebenzisa ugesi wekhadi kuleli.

Uthe eminyakeni engu-15 eyedlule izindleko zikagesi bezingazweli nhlobo kodwa lokhu sekushintshile.



ABANTU bakuleli sebekhetha ukusebenzisa ugesi wekhadi ukuzama ukunganda izindleko zokubiza kukagesi

Ekupheleni kukaFebhuwari nonyaka iNational Energy Regulator of SA imemezele ukuthi izokwenyusa intengo kagesi ngamaphesenti ayisishiyagalombili eminyakeni eyisihlanu ezayo.

Ngakolunye uhlangothi abakwa-Eskom bebefake isicelo sokuthi intengo kagesi bayenyuse ngamaphesenti angu-16 eminyakeni eyisihlanu ezayo, obekuzokwenza ukuthi kube nzima nakakhulu kwabasebenzisa ugesi.

Lokhu kusho ukuthi ngo-2018 intengo kagesi ibizobe seyinyuke ngamaphesenti angu-128.

UHughes utshela izethameli zengqungquthela ukuthi bazithuthukisile izindlela zokusiza amakhasimende njengoba isikhungo sabo sezingcingo sisiza abangaphezu kwezigidi eziyisithupha ngonyaka.

Uthe yize inkampani yabo isagxekwa ngezinye izinto kodwa isahamba phambili kanti inamakhasimende angaphezu kwezigidi ezine.

ISIQEPHU D

4. Ake ulungise amagama abhalwe ngokunzima ngobhalomagama oluvumelekile. Bhala igama elilungile neselifungisiwe.

Phendula kanje : Amafruit = izithelo

Lo nyaka esikuwo ngiyawuthanda ngoba kwenzeka izinto ezinhle zodwa. NgauMgqibelo umalume ubeshadela ingane yakhe uZodwa. Thina sihambe ngaibhanoyi saya ekapa emzini kamalume umandla.

(5)

5. Khipha amabizo alezi zigaba ezilandelayo endabeni oyifundile kusiqephu A bese ubhala ngawo imisho enamagama angeqile kwama- 5. Dwebela ibizo lakho emshweni.

Isibonelo: 5.5 isigaba 1 > Umntu uthanda imali.

5.1 Isigaba 6

5.2 Isigaba 15

5.3 Isigaba 1a

(6)

6. Ake uqedele lesi sigatshana esilandelayo ngezivumelwano (concord) ezifanele. Bhala umusho wonke bese UDWEBELA izivumelwano ozifakile.

6.1 Abafana ___ bheka imali

6.2 Mina ___ thole ngemali eningi

6.3 Uthi ___ shiswe umlilo.

(3)

7. Ake uguqule amabizo abhalwe ngokugqamile abe isabizwana soqobo. Bhala impendulo kuphela.

Izingane eziningi zithanda isikole esinemidlalo eminingi. Mina ngithanda ibhola ngoba ngiyakwazi ukulidlala. Izolo ngibone umfana okwazi ukulidlala kangcono kunami.

(4)

8. Ake ulungise lawa magama abhalwe ngokugqamile abe isabizwana sokubala. Bhala umusho wonke udwebele isabizwana.

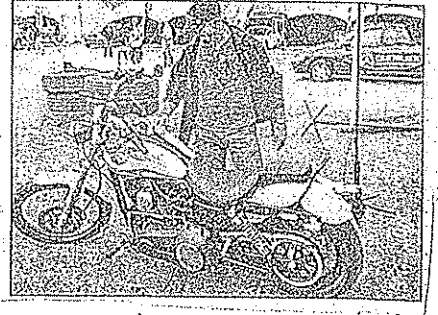
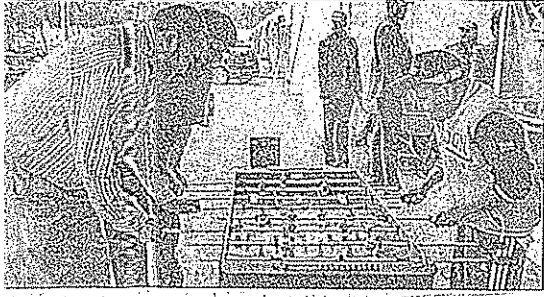
8.1 Lo mfana uziphase -nke izifundo zakhe ngamalengiso.

8.2 Lezi zingane -bili ziphase kahle.

8.3 Wenzani umama engishaya -dwa kodwa besibaningi?

(3)

9. Euka lesi sithombe esilandelayo bese usebenzisa iziqu ozinikiwe ukwakha imisho ezoveza iingcezu zenkulumo ozinikiwe.



- 9.1 -ile > isiphawulo
- 9.2 -ingi > isiphawulo
- 9.3 -ni > ongumnini
- 9.4 -thu > ongumnini
- 9.5 -nyama > isibaluli
- 9.6 -nandi > isibaluli

(6)

10. Guqula lo musho olandelayo ukhombisa inkathi oyibuziwe.

Umusho: Indoda iphuza ubisi.

- 10.1 Inkathi esandakudlula ukuvuma
- 10.2 Inkathi ezofika ukuvuma
- 10.3 Inkathi eyadlula ukuvuma.
- 10.4 Inkathi esandakudlula ukulandula

(4)

11. Ake ubhale igama eliphikisa leli elibhalwe ngenzansi.

Isibonelo: umama > ubaba

- 11.1 Umalume >
- 11.2 Phuma >
- 11.3 Lala >

(3)

12. Sebenzisa leli bizo elilandelayo emshweni ukuze kuvele imiqondo emibili ehlukene.

12.1 Isonto

(2)

13. Gagula ukuthi abantu abalandelayo babizwa ngani. Khetha izimpendulo ezifanele esibayeni. Bhala impendulo kuphela.

Impuputhe, isimungulu, ichide, isithuli, isiminzi

- 13.1 Umuntu ongakwazi ukukhuluma.....
- 13.2 Umuntu odla kakhulu.....
- 13.3 Umuntu ongaboni emehlweni.....

(3)

ISAMBA: 80 AMAMAKI

