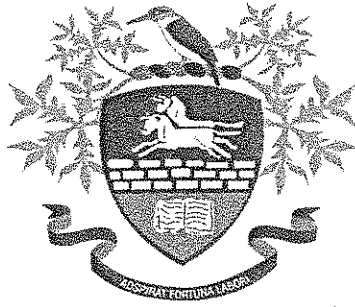


# HILLCREST HIGH SCHOOL



May 2015

## ENGLISH HOME LANGUAGE

Grade 11

Time: 2 hours

Paper 3

Marks: 100

N.B. This question paper consists of 6 pages

### INSTRUCTIONS TO CANDIDATES

**READ THESE INSTRUCTIONS CAREFULLY BEFORE ANSWERING THE QUESTIONS**

1. This question paper consists of TWO sections:

Section A: Creative Writing

50 marks

Section B: Transactional Texts (25 x 2)

50 marks

2. You are required to answer ONE question from Section A and TWO from Section B.
3. You MUST plan, edit and proof-read your work.
4. Use the inside of the answer booklet's cover page to plan. Remember to draw a line through all planning.
5. Rule off on the completion of each response.
6. Number each response as it is numbered on the question paper.
7. Write neatly and legibly.

**SECTION A: ESSAY**

**Question 1**

**Instructions:**

Write an essay of 350 – 400 words (1 ½ - 2 pages) on ONE of the following topics:

The following will be assessed:

- Content and planning (60%)
- Language and editing (30 %)
- Structure (10%)

1.1 “The path to success is to take massive, determined action. It is in the moment of your decision that your destiny is shaped.” [Antony Hopkins] [50]

**OR**

1.2 Fears [50]

**OR**

1.3 The life of a an ordinary teenager [50]

**OR**

1.4 “To live a successful life, we must first lose our fear of being wrong.” [Adapted from Joseph Chilton Pearce] [50]

**OR**

1.5 I am proudly South African! [50]

**OR**

1.6 I discovered the greatest treasure of all... [50]

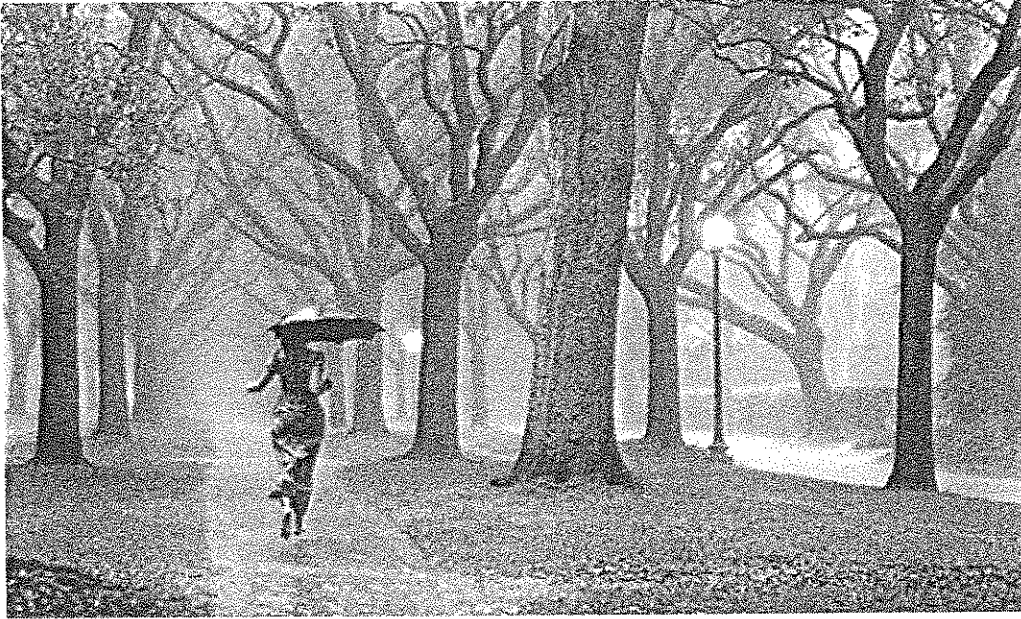
**OR**

1.7 The pictures reproduced on page 3 and 4 might evoke a reaction or feeling in you or stir your imagination. Select ONE picture and write an essay in response.

Write the question number (1.7.1, 1.7.2 or 1.7.3) of your choice and give your essay a title.

**NOTE:** There must be a clear link between your essay and the picture you have chosen.

1.7.1



[50]

OR

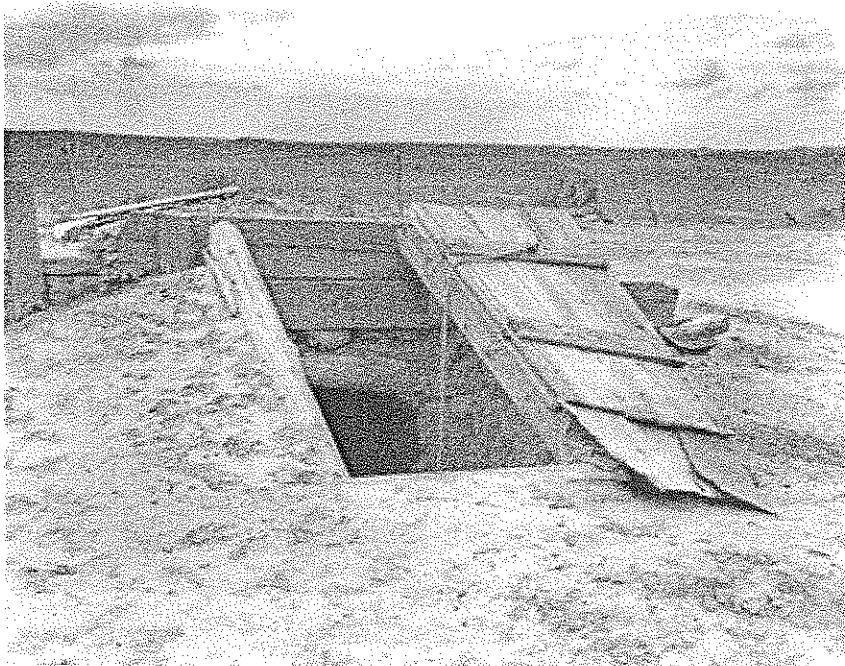
1.7.2



[50]

OR

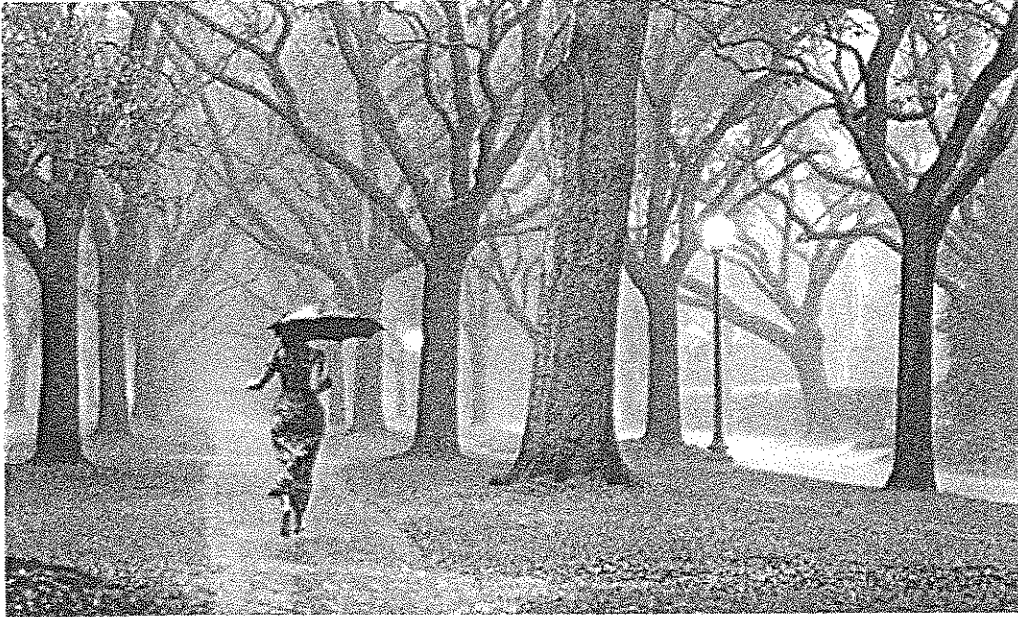
1.7.3



[50]

**TOTAL SECTION A: 50 MARKS**

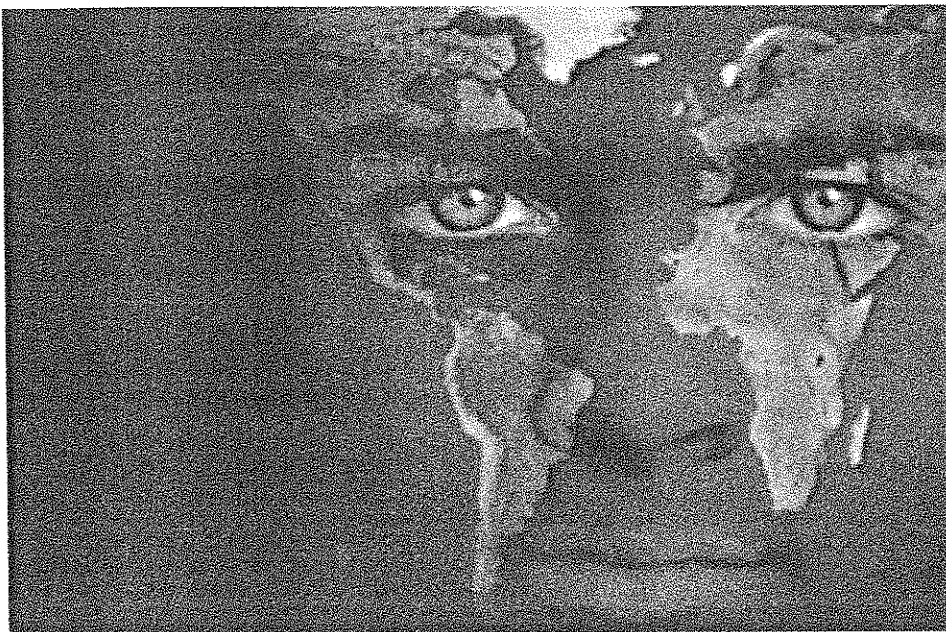
1.7.1



[50]

OR

1.7.2



[50]

OR

## **SECTION B: TRANSACTIONAL TEXTS**

### **QUESTION 2:**

#### **Instructions:**

Respond to TWO of the following topics.

- The body of your answer should be 180 – 200 words.
- Pay careful attention to word choice and language structures and ensure the correct format is used.

The following will be assessed:

- Content, planning and format (60 %)
- Language, style and editing (40%)

#### **2.1 FRIENDLY LETTER**

You recently met someone who has become a mentor (this could be a teacher, coach, priest etc.) and has positively influenced your life immensely. Write a letter to him/her to thank him/her for the contribution he/she has made to your life.

[25]

OR

#### **2.2 OBITUARY**

Choose a respected member of the international community (a president, actor, charity worker, sporting icon) and write an obituary for him/her focusing on specific information as well as what kind of person he/she was and how he/she will be remembered.

[25]

OR

#### **2.3 SPEECH**

Your friend's mother was recently promoted. Consequently, the family has to immigrate to Dubai. You are asked to present a speech at your friend's farewell party. Write the speech you would give for him/her.

[25]

OR

**2.4 DIALOGUE**

Your friend has recently made the decision to drop out of school – the pressure of grade 11 has become too much for him/her. You think that this is an unwise decision and want to convince him/her to stay in school and finish his/her matric. Write the dialogue that would take place between the two of you.

[25]

OR

**2.5 FORMAL LETTER**

There is a production on show of the Shakespearean play you are studying in English this year. Traditionally it has only been the Matrics who go to watch the play they are studying. However, you feel that it would be extremely beneficial for the grade 11s to attend a performance of a play, too. Write a letter of request to Mr Girvin.

[25]

OR

**2.6 MAGAZINE ARTICLE**

Life is not your mother!

Using the title as your guide, write an article to help people cope with the difficulties and complexities of life.

[25]

**TOTAL SECTION B: 25 x 2 = 50 marks**

|                               |
|-------------------------------|
| <b>GRAND TOTAL: 100 MARKS</b> |
|-------------------------------|