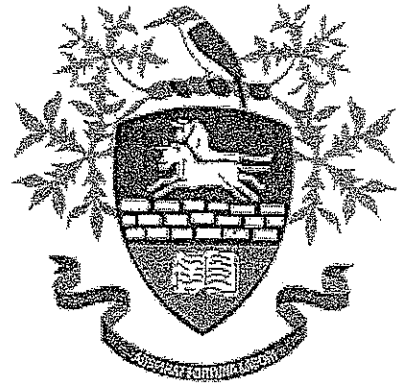


HILLCRREST HIGH SCHOOL
UKUHLOLWA KUKAJUNI 2018
IPHEPHA LOKUQALA [PAPER I]
IBANGA LESISHAGALOMBILI [GRADE 8]
ISIZULU ULIMI LOKUNGEZELELA [FAL]



ISIKHATHI 2 Amhr.

AMAMAKI 100

QAPHELA

- Fundisisa LONKE iphepha ngaphambi kokuqala ukuphendula.
- Phendula YONKE imibuzo njengoba uyalelwe.
- Bhala ngesiZulu esihle esivumelekile.
- Bhala upelomagama olwamukelekile.
- Qala isiqephu ESISHA
- Bhala umsebenzi OHLANZEKILE.

OKUHLE KODWA!!!!

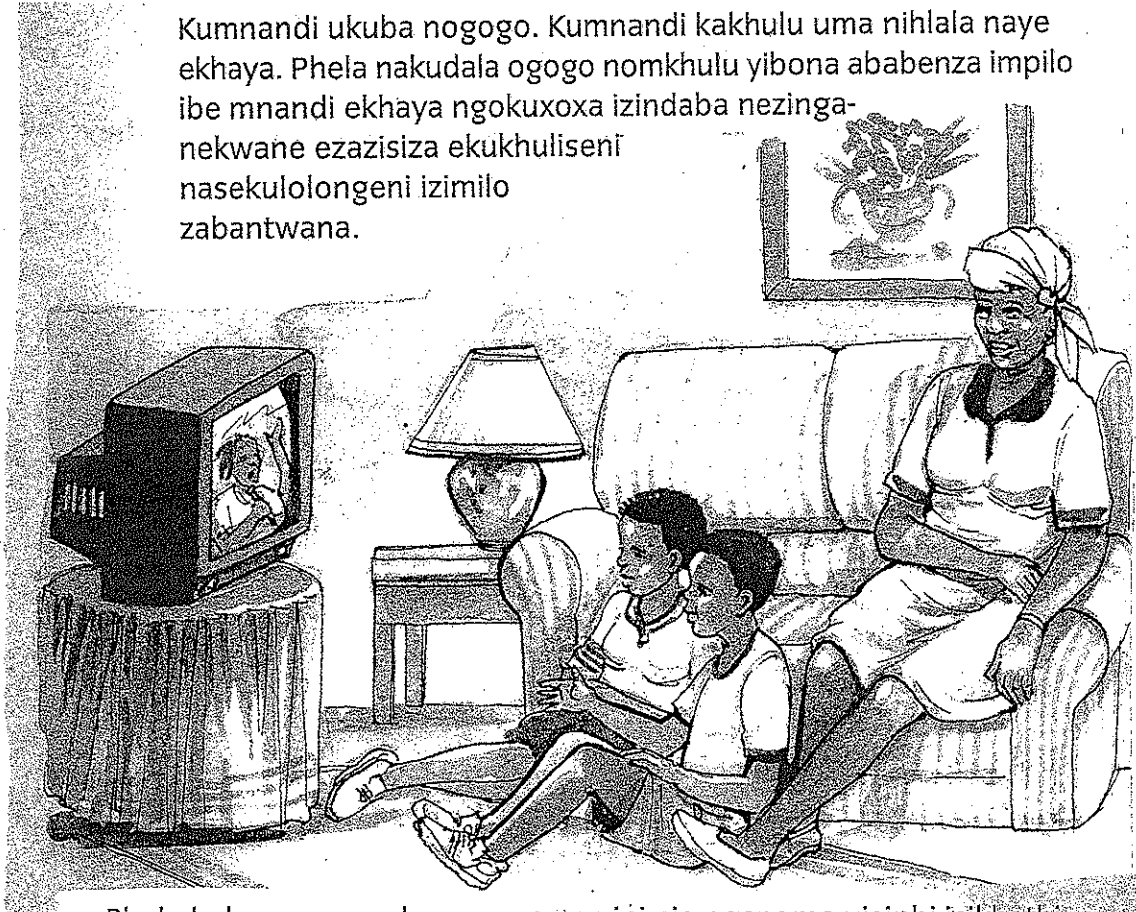
ISIQEPHU A

1. Fundisisa indaba elandelayo bese uphendula imibuzo ngemisho EPHELELE.

KUSA KUSA

ULimile nomfowabo uSimo bajwayele ukuhlala nogogo wabo babuke umabonakude. Esikoleni baxoxela abangani babo ngobumnandi bokuba nogogo ikakhulukazi uma nihlala naye ekhaya njengabo.

Kumnandi ukuba nogogo. Kumnandi kakhulu uma nihlala naye ekhaya. Phela nakudala ogogo nomkhulu yibona ababenza impilo ibe mnandi ekhaya ngokuxoxa izindaba nezinganekwane ezazisiza ekukhuliseni nasekulolongeni izimilo zabantwana.



Phela babengamane baxoxe noma yini nje nganoma yisiphi isikhathi. Babelinda kuze kuhlwe, bazixoxe kahle-ke izindaba zabo kungasekho imisebenzi yosuku esadinga ukwenziwa. Ingani phela babebona kahle ukuthi uma izindaba lezi zizoxoxwa emini izoma nse imisebenzi, abantu sebelibele ukulalelana nezindaba nezinganekwane. Lokho phela futhi kwakungasuke kukhuthaze nobuvila entsheni.

Namuhla sesiya ngokuphela lesi sikhathi esasimnandi kangaka. Ingani phela ogogo nomkhulu abaningi sebevama ukuyozihlalela emakhaya abantu abadala baze bedlulele kobabamkhulu sebezihlalela lapho. Nawo amathelevishini lawa asayithatha ayivala indawo yogogo. Izingane sezimane zihlale zigqolozele ithelevishini. Lapho-ke ngisho nemisebenzi yesikole ima nse uma sekuvulelwe umabonakude. Bangaxoxani-ke lapho ogogo? Ngasiphi nje sona isikhathi? Nansi nemisakazo iyabelesela ngezinhlelo zayo. Hhayi, impela zinhle lezi zinto kodwa manje kuningi okusilahlekelayo okungabe siyakuncela kogogo nomkhulu besawadla nje anhlamvama.

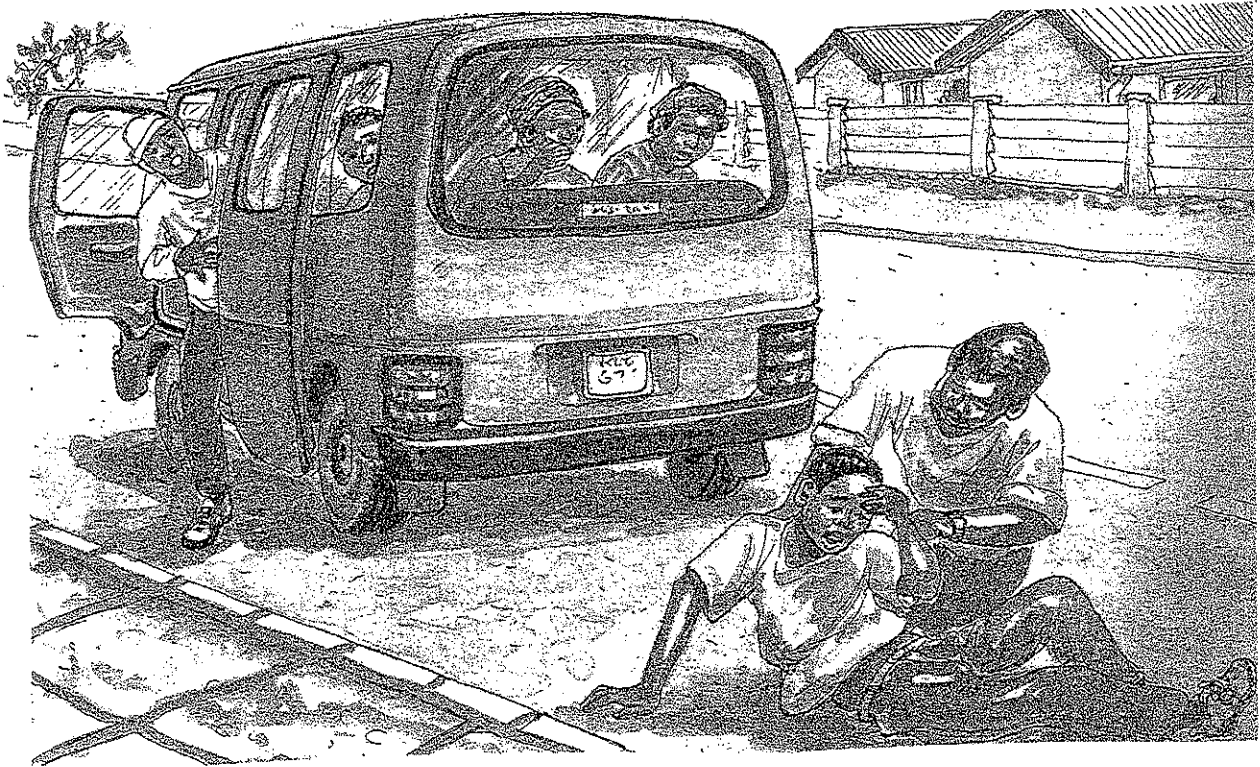
Ekhaya ugogo wake wasibulala ngensini sibuka yona le-thelevishini. Kwakunesikhangisi esasilokhu sivele nomama othile owayekhangisa ngomuthi wokuxubha. Ngenxa yokuthi wayesevele kaningi lo mama kulezo nsuku wagcina ugogo esethi: "Mameshane! Nali bo inuku lenkosikazi. Kuthangi nayizolo ubegqoke kanje ekhangisa ngalo muthi wokuxubha, nanamhlanje futhi usagqoke lezo ngubo! Animtsheli yini ashintshe?" Sahleka lapho kwaze kwalamula umama owamchazela ugogo ukuthi kungani lo mama eyiloku evela egqoke ingubo leyo. Wathi eqeda nje ukuchaza, sasivela futhi lesi sikhangisi, ugogo wamane wasukuma wathi useyolala.

Icashunwe encwadini, IsiZulu Sethu Esicebile 5

- 1.1 Obani ababili abahleli nogogo wabo lapha endabeni? [2]
- 1.2 Yini ababevame ukuyixoxa ogogo ngesikhathi sakudala? [1]
- 1.3 Zisiza ngani izinganekwane empilweni yomuntu ngokusho kwendaba? [2]
- 1.4 Kungani ogogo babengazixoxi emini izinganekwane ngokusho kwendaba?
Bhala isizathu esisodwa. [2]
- 1.5 Ngalesi sikhathi samanje yini esithathe isikhathi esimnandi sokuxoxelwa
ngogogo izinganekwane emakhaya? [2]
- 1.6 Bhala amagama owafunde endabeni achaza okufanayo naloku okushiwo
ilawa alandelayo lapha.
- 1.6.1 amaradiyo [1]
- 1.6.2 ngeke kusasetshenzwa [1]
- 1.7 Caphuna umusho owufunde endabeni osho ukuthi izingane azibe
zisasuka kumabonakude uma uke wavulwa. [2]
- 1.8 Yini ayekhonda ngayo ugogo mayelana nomama owayekhangisa
ngomuthi wokuxubha? [2]
- 1.9 Wena wawuzomchazela uthini ugogo ngomama okhangisayo ukuba
kwakuthiwe akachazelwe nguwe. [2]
- 1.10 Bhala lo musho kabusha ushintshe amagama abhalwe ngokuhlukile
abeyisiZulu esijwayelekile.
- 1.10.1 Kuningi okungabe siyakuncela kogogo nomkhulu besawadla
anhlavana. [3]
- 1.11 Bhala umusho olandelayo kodwa uphikise loku okushiwo kuwo.
- 1.11.1 Mameshane! Nali bo inuku lenkosikazi. [1]
- 1.11 Sibona ngani ukuthi incazelo kamama mayelana nomama okhangisayi
ayizange imanelise ugogo? [1]
- 1.12 Yini esibona ngayo ukuthi le ndlu abahlezi kuyo igumbi lokuphumula?
Bhala izinto EZIMBILI. [2]

2. Funda ingxoxo elandelayo bese uphendula imibuzo ebuziwe ngemisho EPHELELE

UBOTHENGA EYAKHO



- 2.1 Kukuphi nendawo lapho kukhulunywa khona kanje? (1)
- 2.2 Ubani lo othi umama akanciphe? (1)
- 2.3 Uma uzwa indlela yokukhuluma esetshenziswa umsizi izwakala injani? (1)
- 2.4 Ukuba uwena ongumsizi womshayeli ubungayisho kanjani le nkulumo eshiwo umsizi la ngendlela ehloniphekile. Bhala imisho **EMITHATHU** eshintshiwe obungayisho wena esikhundleni sale eshiwo umsizi ekuqaleni kwengxoxo. (3)
- 2.5 Ngokubona kwakho kufanele yini akhokhe umama njengoba ehla emotweni? Vuma noma uphike bese usekela impendulo yakho ngephuzu **ELILODWA**. (2)
- 2.6 Le ndawo okumi kuyo itekisi isemakhaya noma isedolobheni? Fakazela impendulo yakho ngesibonelo **ESISODWA**. (2)
- 2.7 Kufanele yini ukuthi uma umkhulu ngomzimba ukhokhele abantu ababili

- etekisini.? Veza umbono wakho ngephuzu ELILODWA. [2]
- 2.8 Umama njalo uma ephendula umsizi ukhombisa inhlonipho. Bhala umusho OWODWA ngenhlonipho. [2]
- 2.9 Bangaki abantu obabona lapha esithombeni? Bhala inani ngesiZulu. [2]
- [15]

3. Gcwalisa izikhala ngamabizo ayizigaba ozinikeziwe ezikokeleni. DWEBELA ibizo olisebenzisile.

Isibonelo: (i) [2a] abasakwazi ukuxoxa izinganekwane manje.

(ii) Ogogo abasakwazi ukuxoxa izinganekwane manje.

- 3.1 Izingane ziyathanda ukulalela [10] ezixoxwa ogogo bazo.
- 3.2 Izindaba zazingaxoxwa uma kukhona [4] esazokwenziwa ekhaya.
- 3.3 [1a] iwona osewathatha isikhathi sokuthi umndeni uxoxe kahle.
- 3.4 .Ugogo udidwa umama ohlezi egqoke [9] efanayo zonke izinsuku.
- 3.5.. Lo mama wenza [7] somuthi wokuxubha.

[10]

4. Gcwalisa imisho elandelayo ngokubhala uhlobo lwebizo olunikezwe ezikokeleni. DWEBELA ibizo olibhalile.

Isibonelo: (i) [ibizoqoqa]

(ii) Umfana uqhuba umhlambi wezinkomo zakubo.

- 4.1 UNomathemba udumile lapha endaweni ukuthi-cula [ibizomuntu] ophambili.
- 4.2 Udadewethu omncane uyathanda ukugcoba[ibizo eliwumfakela] esinkweni sakhe.
- 4.3[ibizoqho] ufunda esikoleni ofunda uhlala khona.
- 4.4 Abazali njalo bakhombisa[-thanda] ezinganeni zabo. [ibizonto]
- 4.5 Bathi[ibizo eliwumfakela] lishibhile kwa-Spar kulezi zinsuku.

[10]

5. Buka isithombe esilandelayo bese ugcwalisa imisho ekhuluma ngaso ngeziqo zesiphawulo ozinikeziwe DWEBELA ungasiphindi isiqu sesiphawulo osisebenzisile.

Isibonelo: (i) ngaki?

(ii) Intombazane ineka izingubo ezingaki?



-fushane, -de, -ncane, -sha, -khulu,-ningi

5.1 Esithombeni kukhona umuzi.....

5.2 .Imoto kababa.....uyigeza yedwa

5.3 UDelisile ushanela igceke ngomshanelo.....

5.4. .Isihlahlasenza umthunzi omnandi kugogo nomkhulu.

5.5 Umalume ugibela iladi ...ukuze asebenze ophahleni lwendlu.

[10]

6. Funda ingxoxo bese ushintsha amagama adwetshele uwenze ukuphika.



6.1

6.2

6.3

6.4

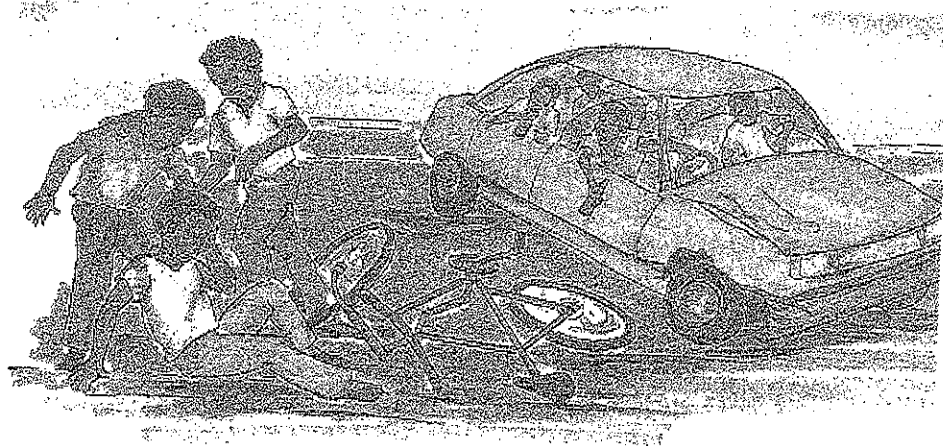
6.5

[5]

7. Buka isithombe bese ushintsha amabizo emshweni ebhalwe ngaso isithombe uwenze abe izabizwana zoqobo.

Isibonelo: (i) Imfundo ibalulekile kubantu bonke.

(ii) Yona ibalulekile kubantu bonke.



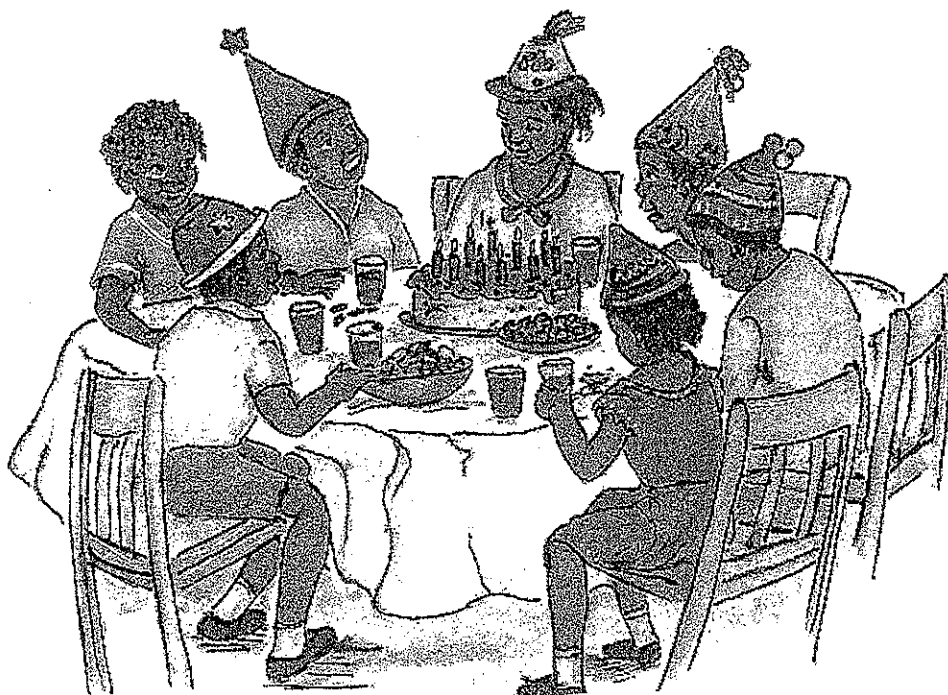
7.1 Imoto egcwele abantu abaphuze 7.2 utshwala isishayise 7.3 ibhayisikili ebelihamba emgwaqweni. Abanye baphethe 7.4 amabhodlela otshwala baphula 7.5 umthetho womgwaqo.

[5]

8. Gcwalisa imisho elandelayo emayelana nesithombe usebenzise iziqu zongumnini uchaze okwenzeka kuso.

Isibonelo: (i) -kho

(ii) Kuthiwa sifika nini isitimela sakho?



8.1 Umngani [-ithu] uTholakele wenzelwe umcimbi wokugubha usuku lokuzalwa.

8.2 Zonke izihlobo [-khe] bezimenyiwe noma zingafikanga zonke.

8.3 Mina isipho [-mi] engimthengele sona ngisithenge kwa-Mr Price.

8.4 Abangani sebefake izigqoko [-bo] abazinikwe umama kaTholakele.

8.5 Umama uthi, "Usuzosika ikhekhe [-kho] khona sizodla sonke."

[5]

9. Funda imisho elandelayo bese ushintsha amagama abhalwe ngokunzima uwenze igama ELOLODWA.

9.1 Umfowethu uhambe ekuseni ethi uyohlangana nomama ozala inkosikazi yakhe.

9.2 UDadewabo kababa uyathanda ukusivakashela ngoKhisimusi.

9.3 Kade siyobona inkosikazi kamfowabo kamama esibhedlela ngoba kade igula.

9.4 Ngonyaka ozayo ngizofunda nezingane zikadadewabo kamama.

9.5 UHloniphile uthe usele nobaba ozala umyeni wakhe kuphela ekhaya.

[10]

10. Bhala amagama aphikisana nalawa abhalwe ngokugqamile kulawa angenzansi.

10.1 Umkhulu uzosihlabela isikhukhukazi ekhaya.

10.2 Bekumenywe izinsizwa zodwa emcimbini wakwaKheswa.

10.3 Namhlanje kuhola izalukazi zodwa.

10.4 Amakhosikazi afundisana ukupheka esontweni.

10.5 Kunomgido wamatshitshi esigodi sonke.

[5]

ISAMBA [100]