

This question paper consists of 8 pages.

TIME: 2 hours

MARKS: 100

MATHEMATICS P1
 COMMON TEST
 JUNE 2018

GRADE 11

NATIONAL SENIOR CERTIFICATE

Department of Education
 PROVINCE OF KWAZULU-NATAL

education



1. This question paper consists of 6 questions.
2. Answer ALL the questions.
3. Number the answers correctly according to the numbering system used in this question paper.
4. Clearly show ALL calculations, diagrams, graphs, et cetera, which you have used in determining the answers.
5. Answers only will NOT necessarily be awarded full marks.
6. You may use an approved scientific calculator (non-programmable and non-graphical), unless stated otherwise.
7. If necessary, round off answers to TWO decimal places, unless stated otherwise.
8. Diagrams are NOT necessarily drawn to scale.
9. Write neatly and legibly.

Read the following instructions carefully before answering the questions:

INSTRUCTIONS AND INFORMATION

QUESTION 2

- 2.1 Evaluate, WITHOUT using a calculator: $\frac{6^{\frac{1}{2n}} \times 12^{n+1} \times 27^{\frac{1}{2}}}{32^{\frac{1}{n}}}$ (4)
- 2.2 Calculate the value of $\frac{\sqrt{10^{2016}}}{\sqrt{10^{2018}} - \sqrt{10^{2014}}}$ WITHOUT using a calculator. Show ALL your calculations. (4) [8]

QUESTION 1

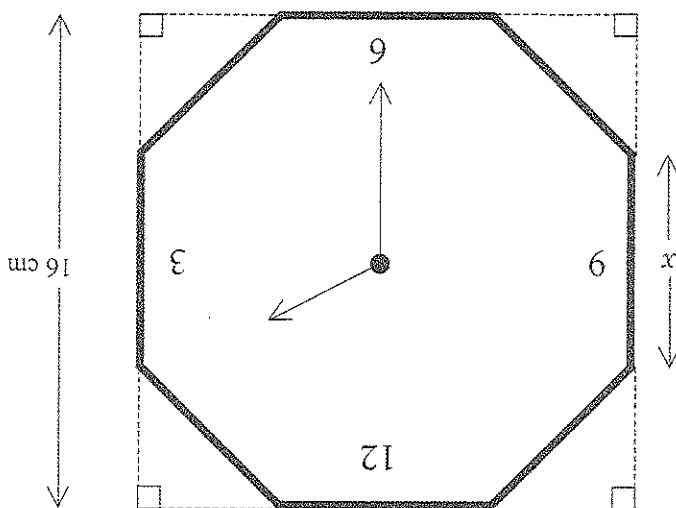
- 1.1 Solve for x in each of the following:
- 1.1.1 $(2x+1)(x-1) = 0$ (2)
- 1.1.2 $2x^2 + 11 = 3x + 21$ (correct to TWO decimal places) (4)
- 1.1.3 $\sqrt{2x-1} + 5 = \frac{\sqrt{2x-1}}{14}$ (5)
- 1.2 Solve simultaneously for x and y :
 $y = 2x + 1$ and $3x^2 - 5xy + 4y^2 = 24$ (5)
- 1.3 Consider the equation $kx^2 + kx + 2 = 0$
 1.3.1 Solve for x in terms of k . (2)
 1.3.2 For which values of k will the equation $kx^2 + kx + 2 = 0$ have non-real roots? (3) [21]

- 4.1 Consider the quadratic number pattern: $0; -9; -16; -21; -24$
- 4.1.1 Determine the n^{th} term (T_n) of the pattern. (4)
- 4.1.2 Calculate the 30^{th} term of the pattern. (2)
- 4.1.3 Determine which term of the pattern will be equal to 200. (4)

QUESTION 4

[7]

If the length of a side of the clock face is x , calculate the value of x correct to TWO decimal places.



Jabu manufactures wall clock faces in the shape of a regular octagon (eight-sided shape having sides of equal length). He cuts off identical isosceles triangles from the corners of a square sheet of glass having sides 16 cm long.

QUESTION 3

4.2 The first three figures in a pattern of grey and white squares are shown below.

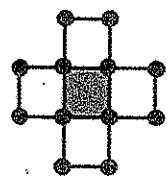


Figure 1

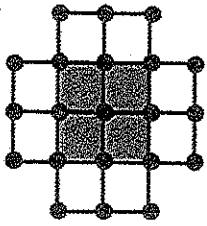


Figure 2

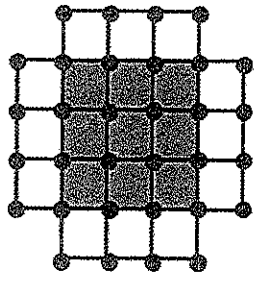


Figure 3

4.2.1 Considering Figure 4 in the pattern, determine:

(a) The number of grey squares in this figure. (1)

(b) The number of white squares in this figure. (1)

(c) The number of dots in this figure. (1)

4.2.2 Considering the n^{th} figure, determine an expression in terms of n for:

(a) The number of grey squares. (1)

(b) The number of white squares. (1)

(c) The number of dots. (2)

4.2.3 There are 320 dots in one of the figures. Determine the number of grey squares in this figure. (5)

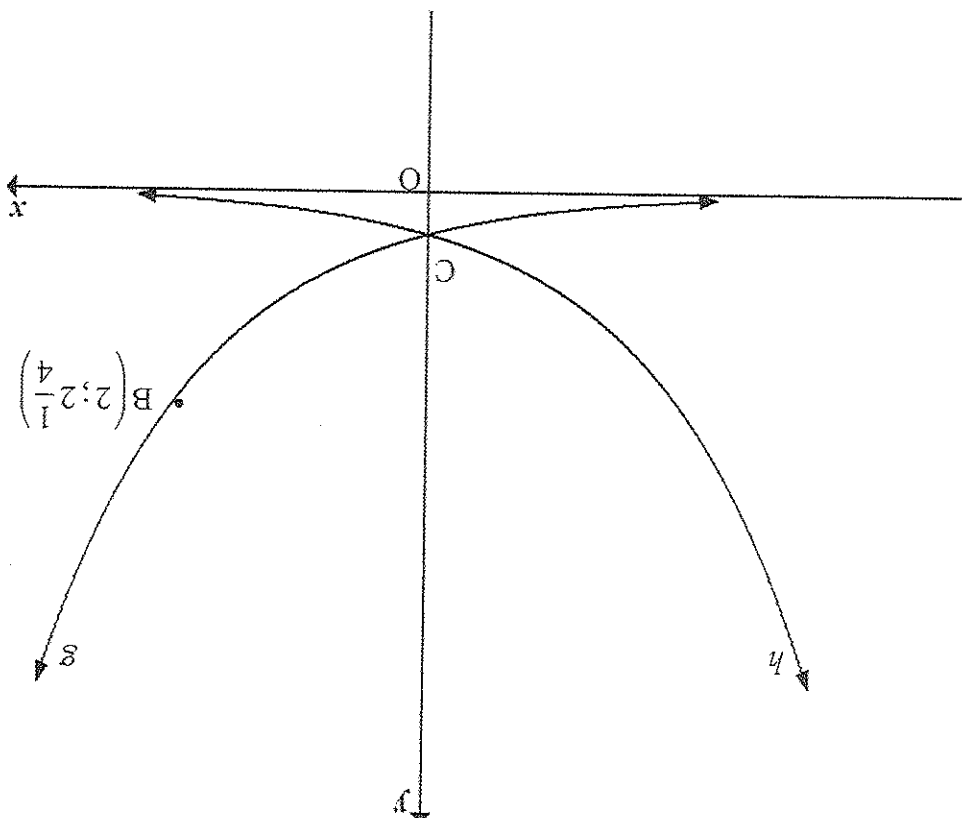
[22]

QUESTION 5

5.1 Given: $f(x) = \frac{-6}{x+3} + 2$.

- 5.1.1 Draw a neat sketch graph of f , indicating the asymptote(s) and intercept(s) with the axes. Show all your calculations. (6)
- 5.1.2 An axis of symmetry of f has the equation $y = mx + 5$. Write down the value of m . (1)

5.2 In the diagram below, g represents the function $g(x) = a^x, a > 0$. The graph h is symmetrical to g about the y -axis. The point $B\left(2; 2\frac{1}{4}\right)$ lies on the curve of g and C is the y -intercept of both g and h .



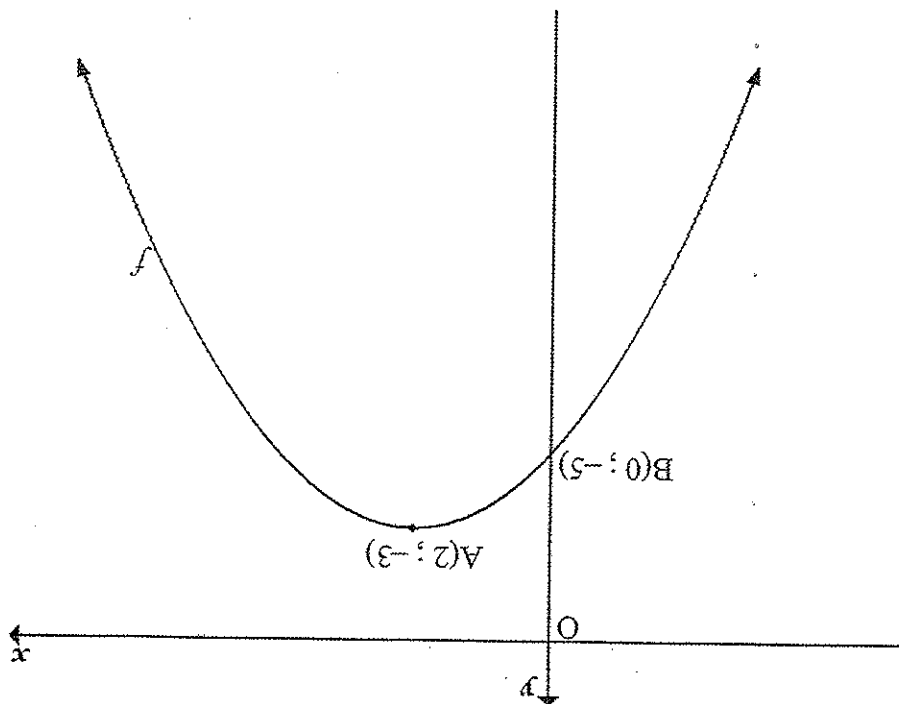
5.2.1 Write down the range of g . (1)

5.2.2 Calculate the value of a . (2)

5.2.3 Determine the equation of h in the form $y = b^x$. (2)

5.2.4 B' is the reflection of B in the y -axis. Calculate the average gradient between B' and C . (4)

5.3 The diagram below shows the graph of a parabola f , with turning point $A(2; -3)$ and y -intercept $B(0; -5)$.



5.3.1 Show that the equation of the parabola can be written as $y = -\frac{1}{2}x^2 + 2x - 5$. (5)

5.3.2 Use the graph to determine the value(s) of k for which the equation $-\frac{1}{2}x^2 + 2x - 5 = k$ will have real and unequal roots. (2)

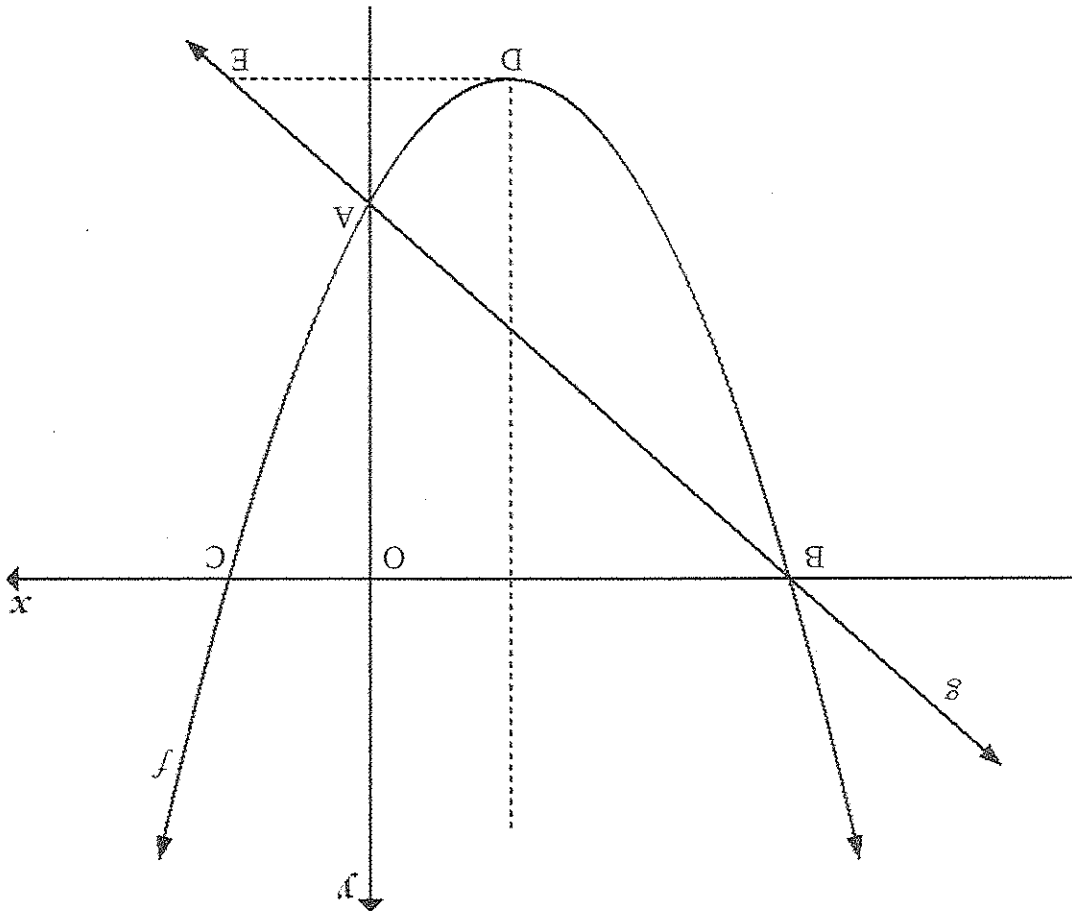
5.3.3 The parabola f is shifted vertically until the new y -intercept is at the origin. Determine the new turning point of the parabola. (2)

[25]

TOTAL MARKS: 100

[17]

- 6.1 Determine the coordinates of A, B and C. (5)
- 6.2 Determine the coordinates of D. (3)
- 6.3 Use the graphs to determine the values of x for which $f(x) \geq g(x)$. (2)
- 6.4 Determine the equation of g in the form $g(x) = mx + c$. (3)
- 6.5 Determine the length of DE, if DE is perpendicular to the y -axis. (4)



The diagram below represents the functions: $f(x) = \frac{3}{2}x^2 + 3x - \frac{2}{9}$ and $g(x) = mx + c$.

- A, B and C are the points at which f intersects the axes.
- D is the turning point of f .
- g passes through A and B.
- E is a point on g .

QUESTION 6