

**Hillcrest High School**



**GRADE 11 CONSUMER STUDIES EXAM**

**MAY 2019**

**Marks: 150**

**Time: 2 hours**

**Examiner: Mrs. N. Magubane**

**Moderator: Mrs. D. Kroone**

**INSTRUCTIONS AND INFORMATION**

- **All sections are compulsory.**
- **Number the answers correctly according to the numbering system used in this question paper.**
- **Write all your answers on the answer book provided.**
- **Leave a margin for marking.**
- **Pay attention to spelling and sentence construction.**
- **Write neatly in blue or black pen.**

**SECTION A: SHORT QUESTIONS****QUESTION ONE: Multiple Choice**

Various possible options are provided as answers to the following questions. Choose the correct answer and write the letter next to the question number in your answer book, e.g. **1.1. A**

1.1 Salary before deductions is called a/an ... salary

- A annual
- B **gross**
- C fringe
- D net

(1)

1.2 From the list below, select a sandwich filling that is suitable for a growing child

- A **Peanut butter**
- B Marmite
- C Chocolate spread
- D Syrup

(1)

1.3 Foods are divided into groups according to their....

- A Interaction
- B Digestibility
- C Sources of origin
- D **Nutritional content**

(1)

1.4 Statistics South Africa conducts surveys on income and expenditure patterns every

- A 2 years
- B 10 years
- C **5 years**
- D 7 years

(1)

1.5 Five equal groups into which population can be divided according to income

- A Equal quantities
- B **Quintiles**
- C Dividends
- D Equal groupings

(1)

- 1.6 Money paid to after they stop working or retire
- A Retirement salary
  - B **Pension fund**
  - C Collected contribution
  - D Unemployment insurance fund
- (1)
- 1.7 A set amount of money paid every month available for the family to spend on
- A Disposable income
  - B **Income**
  - C Wages
  - D Salary
- (1)
- 1.8 Detailed breakdown of all planned expenses and income for a specific period
- A Summary of expenses
  - B Record sheet
  - C **Budget**
  - D Money plan
- (1)
- 1.9 The following plays and important role in basal metabolic rate
- A Food allergies, gender, age
  - B Food allergies, state of health and culture
  - C **State of health, gender and age**
  - D Gender, age, culture
- (1)
- 1.10 Children should take ... rich foods to help them prevent oosteomalicia
- A Fluoride
  - B Iron
  - C **Calcium**
  - D Vitamin B
- (1)

[10]

**QUESTION TWO: Matching columns**

In **each** of the following questions, match an item from Column A with an item from Column B. Write the correct letter next to the question number in your answer booklet, e.g. **2.1.1. A**

2.1

	<b>Column A: Nutrient</b>		<b>Column B: Good Source</b>	
2.1.1	Protein	<b>D</b>	<b>A</b>	Cheddar cheese
2.1.2	Vitamin C	<b>B</b>	<b>B</b>	Fresh strawberries
2.1.3	Carbohydrates	<b>E</b>	<b>C</b>	Fried chips
2.1.4	Calcium	<b>A</b>	<b>D</b>	Grilled boerewors
2.1.5	Lipids	<b>C</b>	<b>E</b>	Oats porridge
			<b>F</b>	Carrots

(5)

2.2

	<b>Column A: Fabric properties</b>		<b>Column B: Description</b>	
2.2.1	Pilling	<b>E</b>	<b>A</b>	Fabric falls in soft folds
2.2.2	Elasticity	<b>D</b>	<b>B</b>	Fabric takes up moisture and water
2.2.3	Crease resistance	<b>F</b>	<b>C</b>	Fabric resisting grease and stains
2.2.4	Absorbency	<b>B</b>	<b>D</b>	Fabric can return to its original shape when stretched
2.2.5	Draping quality	<b>A</b>	<b>E</b>	Small balls appear on the surface
			<b>F</b>	Fabric cannot wrinkle easily

(5)

**[10]****QUESTION THREE: Correct combinations**

1.3 In **each** of the following questions, choose the correct combination of answers. Write the correct letters next to the question number on your answer booklet, e.g. **1.3.1 A,B**

1.3.1 From the list below, select TWO analogous colours...

- A **Red-purple**
- B Green
- C **Red**
- D Yellow
- E Blue
- F Orange

(2)

1.3.2 From the list below, select TWO complete proteins...

- A **Meat**
- B Soya
- C Beans
- D Chickpeas
- E Legumes
- F **Eggs**

(2)

1.3.3 From the list below, select TWO disaccharides ...

- A Pectin
- B Glucose
- C **Sucrose**
- D Dextrin
- E Galactose
- F **Lactose**

(2)

1.3.4 From the list below, select TWO finishes that alter performance...

- A **Anti-bacterial**
- B Raising
- C Napping
- D **Static control**
- E Starching
- F Calendaring

(2)

1.3.5 From the list below, select TWO design elements...

- A **Colour**

- B Harmony  
 C Emphasis  
 D **Shape**  
 E Balance  
 F Rhythm

(2)

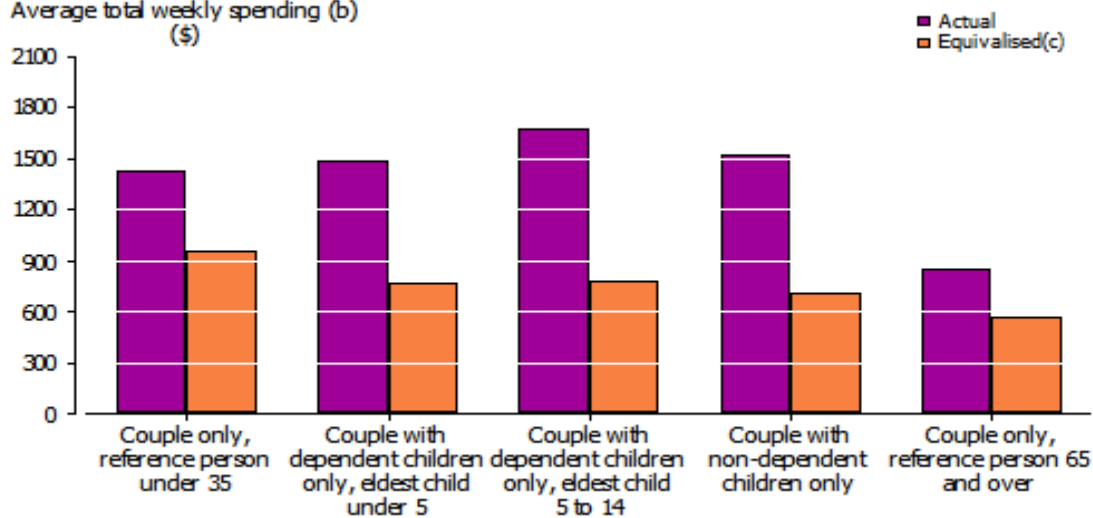
[10]

**TOTAL SECTION A: [30 Marks]**

**SECTION B: THE CONSUMER**

**QUESTION FOUR**

Average total weekly spending (b)  
 (\$)



Study the above income and expenditure survey based on actual spending patterns for different households and answer the questions below:

- 4.1 Briefly discuss household composition and its effects on spending patterns. **The number of people living in the household and their different age groups** has an effect due to their different needs that have to be met on a daily basis. (2)
- 4.2 Explain why are families with no dependents over 65 can spend less on a weekly basis?  
**-Bond paid up**  
**-Socialise less**  
**-Need less food**  
**-Buy less clothing**  
**-Use less electricity and water** (2)
- 4.3 Explain why are couples with children between the ages of 5-14 spending more on weekly basis?  
**-They have more people to take care of**  
**-Food, household amenities, medical expenses, water and electricity, transport are needed on daily basis to not only meet their needs but also for the family too.** (2)

4.4 A similar expenditure pattern is visible on couples with no dependants and couples with children under 5 years why is that so?

**-Young couples without children socialise a lot √. They tend to continue their social routine with small children in tow. (4)**

**-Couples with younger children still spend approximately the same since their kids rely on them since the needs are not too much in demand√**

[10]

## QUESTION FIVE

Read the following extract and answer the questions that follow:

The Coetzee family lives in Hillcrest are where all three children attend a private school in the area. The mom Theresa stays at home while the Dad Jonathan works at a mining company in Durban. He earns R30 000 monthly. Theresa is a qualified beautician, but she is unemployed.

Theresa likes to have tea with her friends at a local coffee shop during the week and goes to the hairdresser before picking up her children from school. Courtney her eldest daughter is in grade 12 and attends ballet lessons as she aspires to become a well-known ballerina one day. The twin boys Jeremy and Jerome are in grade 10 and attend a cyber-sport academy where they train for their championship tournament that is upcoming next year for three days in a week. These teenagers receive an allowance of R350 so that they can entertain themselves every week.

Jeremy is often stressed and frustrated because the expenses are too much to manage. He is very dedicated to his family needs and will always do anything to ensure their happiness. The boys have to travel to Brazil for their tournament which costs R55 000 per child just for travelling expenses excluding meals for the week.

5.1 Do you think that the Coetzee family could afford to pay for the boys to go to the tournament? Motivate your answer. (2)

**No,√ He cannot afford to pay for all the expenses for the trip as well as other necessary expenses at the same time. √**

5.2 Briefly discuss the corrective steps that the family could make collectively in order to achieve this trip. (4)

**Theresa could start a homebased business where she could work and earn to support the family needs expenses√**

**Theresa could also invite her friends over for the coffee instead of paying the coffee shop weekly√**

**The allowance for the children could be cut down completely in order to save money√**

**The children could be encouraged to start working and earn wages in order to have extra money for themselves√**

The parents could consider another school for the boys which might be cheaper to pay school fees and reduce their expenses. ✓  
(ANY RELEVANT ANSWER)

5.3 Discuss the benefits of budgeting for this family. (4)

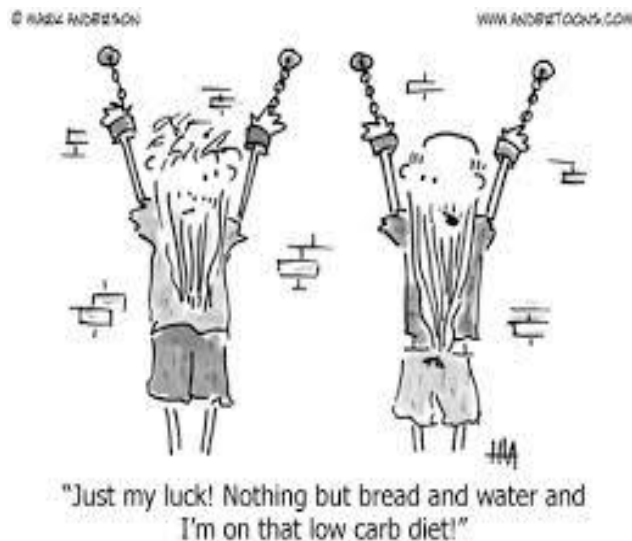
It will help them achieve their goals ✓  
It will give them peace of mind for the future ✓  
It will give them a sense of self-worth especially for Jeremy ✓  
It will help them gain confidence ✓  
It will give them ability to be in control of their finances (debt freedom) ✓  
It will help them to be prepared for unexpected expenses ✓ [10]  
It will ensure they have a positive bank balance ✓  
It will improve their health and wealth ✓  
(ANY RELEVANT ANSWER)

TOTAL SECTION B : [20 Marks]

### SECTION C: FOOD AND NUTRITION

#### QUESTION SIX

Study the cartoon below and answer the questions that follow:



- 6.1 State the nutrients mentioned in the cartoon above (2)  
**Carbohydrate✓s and water ✓**
- 6.2 Carbohydrates are broken down into glucose in the digestive system and used as energy for the body. Explain in detail how this can cause weight gain (3)  
**Excess carbohydrates are stored as glycogen in the liver✓ and this makes up adipose tissue✓ which leads to weight gain✓**
- 6.3 The prisoner in the cartoon states that he is on a "low carb diet!". What are the negative effects associated with a low carbohydrate diet? (2)

- **Lack of energy**✓
- **Inadequate faecal bulk / constipation** ✓
- **Possible colon cancer**✓
- **Protein is used for energy (ANY TWO)** ✓

6.4 Provide one example of each of the following classification of sugars found in the Carbohydrates: (3)

- 5.4.1 Monosaccharide : **glucose**✓
- 5.4.2 Disaccharide: **sucrose, maltose, lactose (any)** ✓
- 5.4.3 Polysaccharide: **glycogen, pectin, dextrin (any)** ✓

[10]

**QUESTION 7**

Read the statement below and answer the questions that follow.

Amino acids are the building blocks of proteins. There are non - essential and essential amino acids

7.1 Explain the difference between non – essential and essential amino acids. (3)  
**Non – essential amino acids are synthesised by the body**✓, **whereas essential amino acids need to be consumed in order to get them**✓. **There are 8 – 10 essential amino acids**✓.

7.2 Discuss the difference between complete and incomplete proteins. Give an example of each. (7)  
**Complete proteins are found in animal sources**✓ **and have all the 8 – 10 essential amino acids**✓, e.g. **meat/milk and milk products/eggs/poultry/fish.** ✓  
**Incomplete proteins are found in plant foods**✓, **legumes and grains**✓ **where the one is lacking the other will have**✓. E.g. **dried peas/lentils/chickpeas/nuts/seeds/dried peas/cereals/rice/pasta/maize/bread.**✓

7.3 Explain to Mrs Stork who is vegan sickly how she can ensure the adequate intake of protein using the term “protein complementation” provide suitable examples. (4)  
**Plant based protein contain all amino acids (22) to make the protein complete**✓  
**Whereas plant based protein contain less amounts of amino acids therefore it is incomplete** ✓ **in order to make this protein complete it has to be eaten with the grain and grain product** ✓ **eg, ( samp and beans/ peanutbutter and bread etc)** ✓ **(any suitable example)**

7.4 Identify two deficiency diseases and two symptoms of excess of proteins tabulate your answer as follows:

Deficiency disease	Symptoms of excess
7.4.1 <b>Kwashiorkor</b>	7.4.2 <b>Obesity</b>
<b>Oedema</b> ✓	<b>Heart disease</b> ✓
<b>Stunted growth</b> ✓	<b>Strokes</b> ✓

(2)  
(2)  
(4)

- 7.5 Fibre is important to make us feel fuller for longer identify two sources of fibre.  
**Oats, lentils, apples, berries, grains, legumes, carrots, whole-wheat, green leafy vegetables (any of these) ✓** (2) [20]

### QUESTION EIGHT

Read the extract and answer the questions below:

- | DO  |  | DON'T  |
|---|--|--|
| <ul style="list-style-type: none"> <li>• Make every bite count</li> <li>• Consume plenty of calcium-rich foods</li> <li>• Get enough fluid</li> <li>• Focus on iron rich foods</li> </ul> |  | <ul style="list-style-type: none"> <li>• Drink alcohol</li> <li>• Follow fad diets</li> <li>• Gain too much weight</li> <li>• Smoke</li> </ul> |
| 8.1   | Name TWO reasons for increased fluid intake in pregnant woman.<br><b>To increase the blood volume✓</b><br><b>To prevent dehydration✓</b>               | (2)  |
| 8.2   | Why is an Iron supplement so important to take during pregnancy?   | (1)  |
| 8.3   | Name TWO iron rich foods.<br><b>Meats like liver✓</b><br><b>Green leafy vegetables✓</b>  | (2)  |
| 8.4   | What effect can drinking alcohol have on a growing foetus?<br><b>The alcohol passes through the placenta✓ and then causes foetal alcohol syndrome✓</b> | (2)  |
| 8.5   | Explain the medical condition spina bifida.<br><b>This is a condition where neural tube defect✓ occurs due to lack of folic acid in the diet✓</b>      | (2)  |
| 8.6   | What is the normal weight gain for pregnant woman?<br><b>It is 11-16 kg✓</b>   | (1)  |

[10]

**QUESTION NINE**

Read the following article and answer the following questions:

**BAD FOOD DOWNS 170 KIDS**

More than 170 pupils from Sombongangani Primary School in Elandskop were treated for suspected food poisoning at different local hospitals this week. While the cause of the outbreak is still under investigation parents are pointing the finger at amasi (soured milk) that was provided through the school's nutrition programme on Monday. Ncumisa Mafunda, spokesperson for the KwaZulu-Natal Health Department, said while she could not confirm the source of the alleged poisoning, she could confirm that 84 pupils were treated at Edendale Hospital and discharged, 58 pupils were treated at Northdale Hospital and 29 at Grey's. Of these, two of the sick pupils had to be admitted to hospital, one at Northdale and one at Grey's. Both were reported to be stable on Tuesday and likely to be discharged. She said some of the pupils — boys and girls aged from six years to 13 years — went to their local clinics for initial treatment and were then referred to hospitals.

**The Witness Newspaper: 27/02/19 (Nompilo Kunene)**

- 9.1 Discuss the causes of food contamination. (2)  
**Contamination occurs when food comes into contact with micro-organisms, ✓chemicals, contaminated water, ✓ surfaces, equipment✓ and through a person who handles it✓**
- 9.2 Provide four symptoms of food poisoning (4)  
**Stomach cramps✓  
 Nausea✓  
 Vomiting✓  
 Diarrhoea✓  
 Fever✓  
 Headaches✓**
- 9.3 Discuss in general how can you prevent food from getting contaminated? (4)

- Ensure that all working surfaces are clean✓
- Ensure that all chemicals and physical hazards are eliminated to prevent it from getting into food✓
- By eliminating harmful favourable conditions for the bacteria to grow✓
- Ensuring personal hygiene is done always to prevent cross contamination✓

[10]

**TOTAL SECTION C: [50 Marks]**

**SECTION D: DESIGN ELEMENTS AND PRINCIPLES**

**QUESTION 10**

Examine the picture below and answer the questions that follow:



10.1 Explain how the following design principles have been applied in this picture:

10.1.1 Rhythm (2)

- Repetition of size and shapes: found on door panels, windows✓**
- Repetition of patterns: found on cushions ✓**
- Repetition of lines: vertical lines on the door and windows✓**
- Repetition of colour and texture: found on the sofas/ couch✓**

10.1.2 Emphasis (2)

- Emphasis is used to draw attention by placing the fireplace in the middle of the room✓**
- Adding features like the two paintings above the fireplace✓**
- Using the lighting and ornaments as well to draw the eye. ✓**

- 10.1.3 Balance (2)  
**The type of balance found is symmetrical balance✓**  
**Two sides are identical to each other✓**  
**It is achieved in this room by placing the same objects on both sides of the room✓**
- 10.1.4 Harmony (2)  
**Harmony of texture: this is achieved by using a combination of smooth and rough textures on the rug and sofas but work well together. ✓**  
**Harmony of lines achieved by using compatible lines on the object placed in the room✓**  
**Harmony of colours: colours used in this room are warm colours that complement each other. ✓**
- 10.2 Analyse the **dominant** use of the following design elements in the room, and comment on the mood / feeling that is created :
- 10.2.1 Line (2)  
  - **vertical lines to elongate the room✓ creating an illusion of height it create a warm feeling and makes the room look neat and formal✓**
  - **Also horizontal lines are used on the ceiling panels making the room wider✓ and organised it also create a feeling of calmness and relaxed✓**
- Shape
- 10.2.2 **Shape used in this room is a rectangular shape ✓ found in the sofas, coffee table, rug etc it create relaxed feeling yet more masculine and inviting✓** (2)
- Space
- 10.2.3 **It is evenly spaced out everything has its space and organised✓ it creates a sophisticated more matured look✓** (2)
- 10.3 Suggest a suitable colour for the walls of this North facing sitting room. Give a reason for your choice (1)  
**Cool colours like blue, light green will provide a cooling effect during hot summer days and will make the room more relaxing ✓**

### QUESTION ELEVEN (CLOTHING)

- 11.1 Very few people have ideal proportions, but everyone strives to give the illusion of a perfect figure:

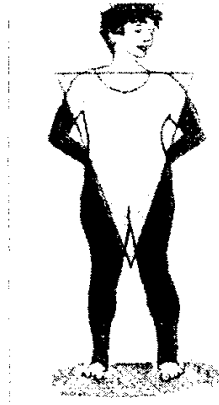


FIGURE A

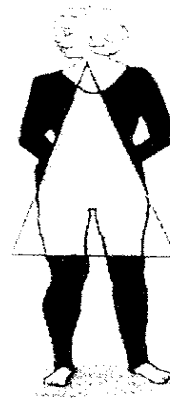


FIGURE B

- 11.1.1 Identify the figure type in each of the illustrations above (2)  
**figure A: inverted triangle✓**  
**figure B: Pear shape✓**

- 11.2 Suggest guidelines how each of the above ladies should dress in order to give the illusion of a perfect figure (4)  
**Figure A: A full bust with a slender waistline✓ can be minimised by wearing dull colours and vertical lines to slim the upper body and hide the imperfections✓**

**Figure B: Bust area small and narrow shoulders✓ can be hidden by using horizontal lines, light colours above the waistline and interesting shoulder details. ✓**

- 11.3 Adele looks a lot slimmer in picture D than she does in picture C. Explain how this illusion has been achieved with the clever use of design elements and principles (8)

C



D



- **Colour: black has a slimming effect in figure D and hide all imperfections. ✓**

- **Line:** horizontal line used in the neckline makes her burst are makes her look fuller in the upper area and more in proportion. ✓
- **Shape:** The length of the dress she is wearing in figure D gives an illusion of height and slim her torso. ✓
- **Harmony:** this has been achieved in figure D by combined all components line, texture, shape and colour making it work. ✓
- **Emphasis:** has been achieved in figure D by drawing the eye to the pleasing features of her face and the lipstick. ✓
- **Balance;** has been achieved by using one colour which makes the outfit carry the same visual weight and more pleasing. ✓
- **Proportion:** this is achieved by length of the garment which makes her slimmer and appropriate. ✓
- **Texture:** the texture used is smooth making her body seem narrow and well proportioned. ✓

11.4 Comment on the effects of the use of patterns in picture C and the illusion it creates on Adele. (1)

**Large patterns have the ability to make an outfit appear busy and this will make Adele appear larger that she already is. ✓**

[15]

**TOTAL SECTION D: [50 Marks]**

## **SECTION E: FIBRE AND FABRICS**

### **QUESTION TWELVE**

12.1 Identify the following weaves and provide two properties and two uses of each of the weaves.

12.1.1

- **Plain weave** ✓

(1)

**Properties :**

**The simplest of all weaving methods** ✓

**Strength of fabric depends on closeness of the weave** ✓

**These weaves wrinkle more easily. Ravels** ✓

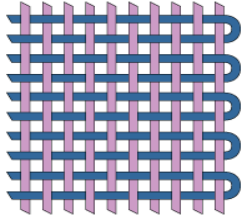
(2)

**Example:**

**Used for blouses, shirts, curtaining upholstery** ✓✓✓ ( any example)

(2)

12.1.2



(1)

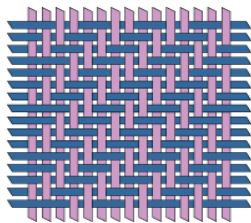
(2)

- Twill weave ✓

(2)

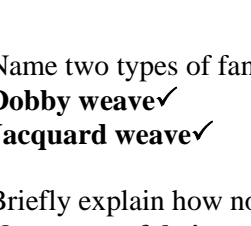
**Properties:****Fabrics are strong,** ✓**Abrasion resistant,** ✓**Even sided twills are reversible forms diagonal ridges across surface of fabric** ✓**Examples: hard-wearing fabrics such as denim.** ✓**Used to make skirts, trousers and school wear** ✓

12.2



(2)

12.3



(3)

Name two types of fancy weaves

**Dobby weave** ✓

12.4

**Jacquard weave** ✓

12.4.1

Briefly explain how non-woven (bonded) fabrics are formed

(1)

12.4.2

**Non-woven fabrics are made by entangling fibres** ✓ **and then bonding them with adhesives into web-like structures.** ✓ **They have no warp or weft and can be cut into any direction without fraying.** ✓

(1)

12.4.3

Provide one word for the following description below:

(1)

12.4.4

Fabric is passed through engraved rollers which gives it a three dimensional design on the surface **Embossing**

(1)

12.4.5

Fabric moves through abrasive rollers to create a fluffy finish, but the process weakens the fabric **Sueding**

(1)

A treatment that makes cotton fabric and thread to be stronger and gives it a soft shine

**Mercerising**This finish helps to reduce the clinging effect of garments **Static Control Finish****[20]**A finish that does not allow any water or air to pass through the fabric. **Waterproofing finish****TOTAL SECTION E: [20 Marks]****GRAND TOTAL OF PAPER 150 MARKS**

