

H.S.S: HISTORY
GRADE 8
MID-YEAR EXAMINATION



GRADE: 8

DATE: JUNE 2021

EXAMINER: S. Cope

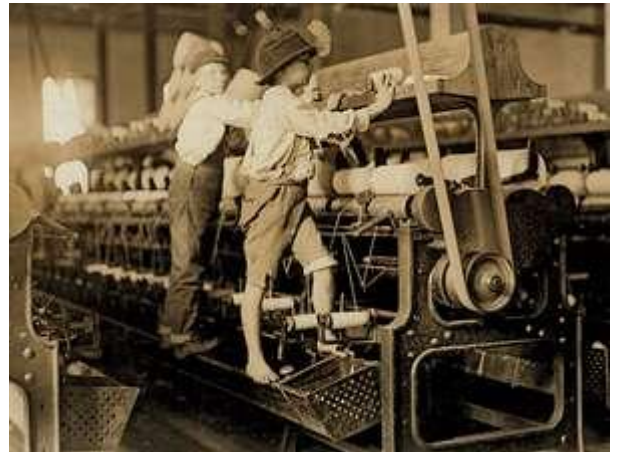
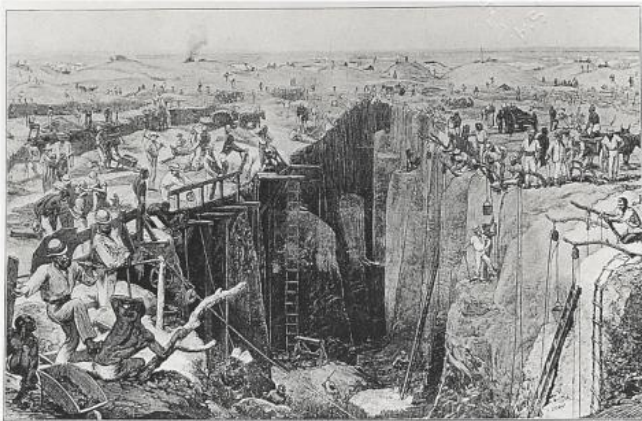
TIME: 1 hour

MODERATOR: E. Moore

TOTAL: 50

INSTRUCTIONS:

1. Write your name, surname and class on your answer sheet.
2. Answer ALL questions.
3. Write on BOTH sides of the paper – don't waste space.
4. Rule off after each section.
5. Number your answers clearly and follow the numbering system on the question paper.
6. It is in your own interest to write neatly and legibly.
7. Ensure that you use full sentences.



SECTION A – THE INDUSTRIAL REVOLUTION

SOURCE A

Early Britain, pre-Industrial Revolution

In the early 18th century British industries were generally small scale and relatively unsophisticated. Most manufacturing was done in homes or small, rural shops, using hand tools or simple machines. Most textile production, for example, was centred on small workshops or in the homes of spinners, weavers and dyers (this was cottage industry).

<https://mazzmanali.wordpress.com/2013/04/12/cottage-industry-and-the-industrial-revolution/>

SOURCE B

The rise of Industrialisation in Britain

A number of factors contributed to Britain's role as the birthplace of the Industrial Revolution. For one, it had great deposits of coal and iron ore, which proved essential for industrialization. Additionally, Britain was a politically stable society, as well as the world's leading colonial power, which meant its colonies could serve as a source for raw materials, as well as a marketplace for manufactured goods.

As demand for British goods increased, merchants needed more cost-effective methods of production, which led to the rise of mechanization and the factory system.

<https://www.history.com/topics/industrial-revolution>

SOURCE D

Living conditions in the towns during the Industrial Revolution

The new, ever-growing towns were not pleasant places to live. Factory owners built small houses for workers. The houses were crammed close together, near the factories with their smoking chimneys. Houses were joined together and built in double rows, back-to-back. Each street had only one water pump, and a sewer (open drain) ran down the middle of the street. Towns were very dirty and diseases spread quickly.

Platinum Social Sciences, Grade 8, page 120.

QUESTION 1

Refer to Source A

- 1.1 Identify the type of industry being discussed in Source A. (1x1)(1)
- 1.2 Using your own knowledge, provide a suitable definition for the term- Industrialisation. (1x2)(2)
- 1.3 From what you have learnt in class, give one positive thing, and one negative thing, of Cottage Industry. (2x2)(4)

Refer to Source B

- 1.4 Provide one reason as to why industrialisation started in Britain. (1x1)(1)
- 1.5 What ultimately led to the rise of mechanization in Britain? (2x1)(2)
- 1.6 What two purposes did colonies perform in the rise of the Industrial Revolution? (2x2)(4)
- 1.7 Would you say this is an example of a primary or secondary source? Explain your answer. (2x1)(2)

Refer to Source C

- 1.8 Provide a suitable definition for- urbanisation. (1x2)(2)
- 1.9 Using the source, describe the living conditions in towns during this time. (2x1)(2)

Total Section A: 20 marks

SECTION B: THE MINERAL REVOLUTION

SOURCE E

The mines were expensive to run, and mine owners tried to keep the money they spent on their workers as low as possible.

Brought in from the reserves in their youth and shipped back in their old age, the migrant labourers do not cost the mining industry a lot in welfare costs. This has to be paid by the poverty-stricken reserves. The mine owners only pay what they have to so that the workers can make a living. The rest goes to the mine owners as profit.

The migrant labourers from the reserves provide the town's labour power without having the right to social benefits that they should get because their work creates wealth.

https://knowledge4empowerment.files.wordpress.com/2011/08/magubane-1979-1990_-ch1_poliecon-raceclass.pdf

SOURCE F

Discussion on how mine owners encouraged migrant labour

Mine owners used four different ways to control the movement of black mine workers.

Taxes, recruitment, contracts and pass laws were all used to confine the movement of mine workers.

Naturally, workers became restless and began to resist in a number of ways. Miners would break their contracts and leave the mines. Many would drink too much alcohol over the weekends and would not come in to work due to being ill. This would slow down production.

Many miners deliberately did their jobs badly or broke their tools. They would act 'stupid' by pretending to not understand the instructions they were given.

P. Ranby, B Johannesson, M Monteith. Platinum Social Science, Grade 8, Pearson. Pages 154 & 160

SOURCE G

The development of family erosion in African communities

There was less and less land to farm in the reserves as white settlers took over more and more land. The soil produced less food...

Families were forced to buy food, tools and clothes from trading stores. People needed money to buy these things. The families in the rural areas relied more and more on money for the things they needed.

Fathers and young men left their homes in the rural areas for long periods of time. They adapted to a different way of life in the city. Women, children, the old and the sick, stayed in the rural areas. This led to the breakdown and erosion of family life.

P. Ranby, B Johannesson, M Monteith. Platinum Social Science, Grade 8, Pearson. Pages 156

QUESTION 2

Refer to Source E

- 2.1 Explain the term 'migrant labour' in your own words. (1x2)(2)
- 2.2 How did the mine owners benefit from the system? Quote from Source B to explain your answer. (2x1)(2)

Refer to Source F

- 2.3 Identify and explain one method mine owners would use to control the movement of black mine workers. (2x2)(4)
- 2.4 List two ways in which miners would rebel against the mine owners. (2x1)(2)
- 2.5 Do you feel these rebellious acts were successful? Explain your answer. (2x2)(4)

Refer to Source G

2.6 Why were families forced to buy things like food and tools? (1x2)(2)


2.7 Using the source, and your own knowledge, explain how family erosion occurred in the African communities during the Mineral Revolution. (2x2)(4)

Total Section B: 20 marks

SECTION C: THE MINERAL REVOLUTION – EXTENDED WRITING

EXTENDED WRITING: Imagine you are a miner working on the gold or diamond minefields. Using your own knowledge and **ALL the sources below**, and explain what life was like working and living on the mines.

Your answer will be assessed on accurate facts, as well as your understanding of the conditions experienced.

<p>Source A:</p>  <p>◀ Source A An early surface mine. Deep-level mining required sophisticated machinery which the smaller mining operations could not afford. (From: L. Callinicos, <i>Gold and Workers</i>.)</p>	<p>Source B: Living conditions on the Mines</p> <p>“... 20 huts in the compounds, being about 14 years old and practically worn out, as the smoke of the years has corroded the iron of which they are built. There are no floors to the huts, no bedsteads, no stoves, no proper ventilation and no lights at night.”</p>
<p>Source C: Life in the Hostels</p> <p>“In the hostel there is no privacy in the rooms nor in the open lavatories nor in the shower rooms. It is against the tradition that a son sees his father naked or on the toilet. But hostel life has forcefully changed that.”</p>	<p>Source D: Taken from a sample of mealie-meal from the Treasury Gold Mining Company</p> <p>“Coarsely ground meal. Many of the particles of flour were black and purple. Slightly mouldy and musty smell. Not fit for the human consumption.”</p>
<p>Source E: Medical officer to Chamber of Mines, 1914</p> <p>“Crowding increases the spread of any infectious disease. This applies particularly to pneumonia, tuberculosis and cerebrospinal meningitis.”</p>	<p>Source F: State Mining Engineer’s report, 1901</p> <p>“At the mines the native must work hard, about 10 hours every day, mostly underground and gets very inefficient food; as a matter of fact he has to live on mealie-meal porridge, although he is supplied with one pound of meat twice a week and recently some mines have commenced supplying them occasionally with fresh vegetables. This does not help much. As a consequence of this bad feeding, the natives are generally unhealthy, and sickness, especially scurvy is of frequent occurrence.”</p>

(10)

TOTAL EXAM: 50

