

HILLCREST HIGH SCHOOL

GRADE 12

TOURISM

JUNE EXAMINATION

Marks 130

Time: 2 hrs

Examiner : Singh

Moderator : Steedman



INSTRUCTIONS

1. THIS PAPER CONSISTS OF FOUR SECTIONS
2. WRITE ONLY IN BLUE/BLACK
3. 3.CALCULATORS ARE ALLOWED
4. START EACH SECTION ON A NEW PAGE
5. LEAVE A LINE AFTER EACH QUESTION
6. SHOW ALL WORKINGS AND CALCULATIONS

SECTION A SHORT QUESTIONS

SECTION B DOMESTIC, REGIONAL AND INTERNATIONAL TOURISM

SECTION C MAPWORK AND TOUR PLANNING

SECTION D GLOBAL ICONS

SECTION A: SHORT QUESTIONS**QUESTION 1**

- 1.1** In each of the following questions four alternative responses are provided. Choose the correct answer and write only the letter (A-D) next to the question number (1.1.1.-1.1.10.) in the answer book.
EXAMPLE: 1.1.12. A

1.1.1 In 2017 and again in November 2019, the Zimbabwe army threatened to take over the government. This political situation is referred to as a/an:

- A Accident
- B Military coupe
- C Terrorist attack
- D War

1.1.2 Goods purchased from stores like the one shown below are:



- A Cheaper because they are exempt from tax
 - B Goods that are of a better quality than those bought in other shops
 - C Goods that are unique to the host country
 - D Prohibited goods that will not be able to leave the country
- 1.1.3 Using a safe to keep your valuables is an important safety measure to adopt when:
- A Travelling in a public transport service
 - B Staying at a hotel
 - C Waiting in an airport to board a flight
 - D Walking in public areas
- 1.1.4 A multigraded hotel, Uber travel services and organised tours will be preferred by:
- A Religious tourists
 - B Leisure tourists
 - C Ecotourists
 - D Backpacking Tourists

- 1.1.5 The following services are not included in the planning of a general itinerary:
- A tourist guide
 - B group activities
 - C a diversity of attractions
 - D luxury accommodation
- 1.1.6 A good tour budget will include midweek flights because they tend to be:
- A more easily available in the morning
 - B filled with activities
 - C much faster and can take you to more than one destination
 - D much cheaper, especially the later the flight.
- 1.1.7 The type of visa that allows a student to work in a restaurant in London while on a 3 month holiday there:
- A Schengen Visa
 - B Student Visa
 - C Temporary Working Visa
 - D Working Holiday Visa
- 1.1.8 Anne-Marie spent the weekend in Madrid, Spain (15° E). She phones her brother in China (120° E). If he receives the call at 19:00, at what time did she make the call?
- A 12:00 the same day
 - B 11:00 the same day
 - C 13:00 the same day
 - D 01:00 the following day
- 1.1.9 A global event hosted by a country will have a positive impact on domestic tourism by increasing:
- A domestic inbound tourist numbers
 - B positive word of mouth in business circles
 - C increasing the number of local children attending the event
 - D improvement in infrastructure and better access to facilities for the local people.
- 1.1.10 The Australian government has to find ways to improve its marketing in order to recoup its massive losses due to the following natural disaster:
- A Tsunami
 - B Earthquake
 - C Massive forest fires
 - D Flooding

(1x10) [10]

1.2 Tour Planning takes a lot of time and research before one can finalize their travel decisions. Arrange the travel planning process below, in chronological order (from start to finish). Write only the question number (1.2.1.-1.2.5.) and the correct letter next to it. E.g. 1.2.6. G

A.	B.	C.	D.	E.
Compile a comparative budget for the client.	Find information about the different destinations and choose the end destination	Make reservations as per the customers' needs and preferences.	Create a tourist profile with the information provided by the tourist.	Finalise the travel documents that the tourists will need to set off on their journey.

(1 x 5)

[5]

1.3 Choose the correct destination from the brackets below. Write only the question number and the correct answer next to it. e.g 1.3.6 Australia

1.3.1 The Rugby World Cup 2023 will be held in (Russia/France).

1.3.2 (Qatar/England) are the hosts of the 2022 FIFA Soccer World Cup.

1.3.3 The annual ultra-road Comrades marathon takes place in the province of (KwaZulu-Natal/Western Cape) in South Africa.

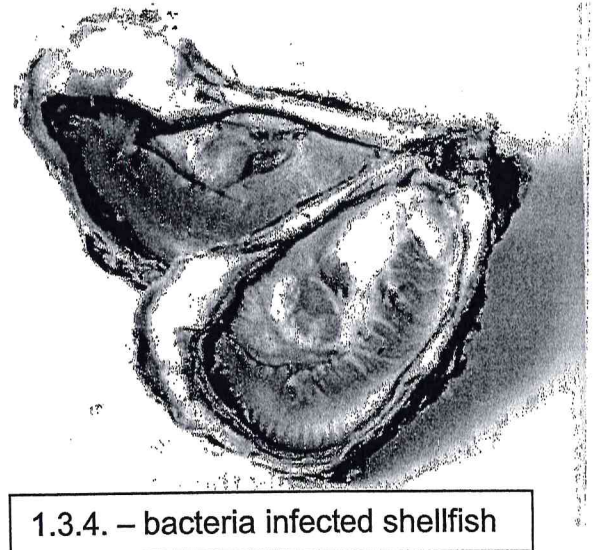
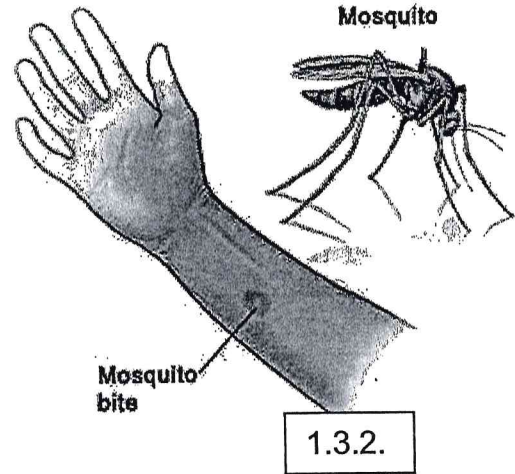
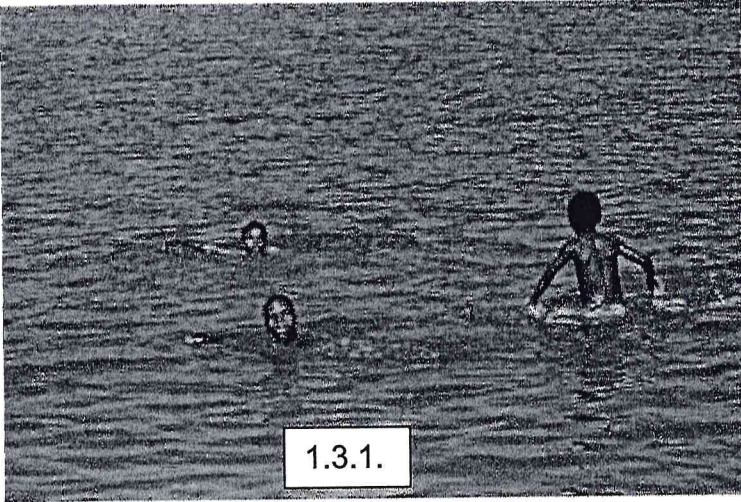
1.3.4 (Beijing/Tokyo) ^{was} the host destination of the 2020 Olympic Summer Games.

1.3.5 Durban lost the bid for the 2022 Commonwealth Games to (England/France).

[5]

1.3 Match the travel related illnesses below with the pictures provided.
Write only the Question number and the name of the correct illness.

Malaria	Hepatitis A	Yellow Fever	Cholera	Ebola
COVID 19	Tuberculosis	Bilharzia	Typhoid Fever	Hepatitis B

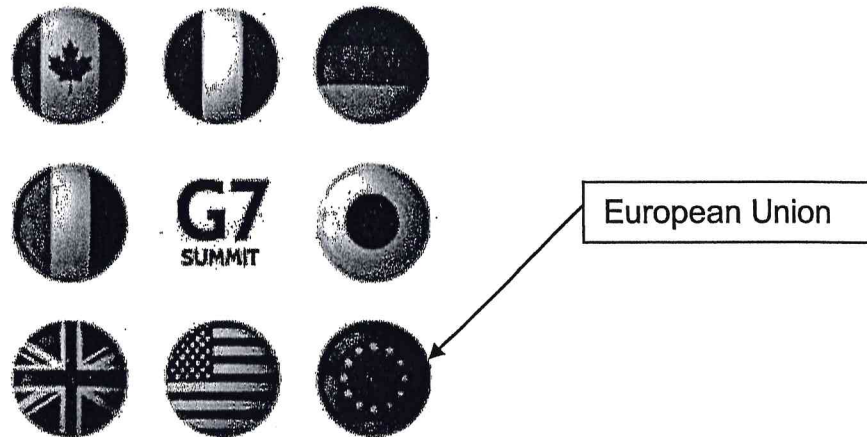


1.3.5.

TOTAL SECTION A: [5]
[25]

SECTION B: DOMESTIC, REGIONAL & INTERNATIONAL TOURISM**QUESTION 2**

2.1 REFER TO THE PICTURE BELOW BEFORE ANSWERING THE QUESTIONS THAT FOLLOW.



In 2014, the G8 summit became known as the G7 summit when Russia was permanently removed from this inter-governmental political forum of seven advanced nations.

The participants now include the leaders of the seven G7 member states, as well as representatives of the European Union (<https://cafod.org.uk>)

- 2.1.1 Identify the country that will host the 2022 G7 summit (2)
- 2.1.2 Briefly describe the purpose of this summit. (2)
- 2.1.3 Suggest **ONE** criteria that makes this summit a Global event. (2)
- 2.1.4 Global events of this nature are seen to be beneficial to the host country. Identify **TWO** negative impacts that a global event can have on the local community. 2 x 2 (4)
[10]

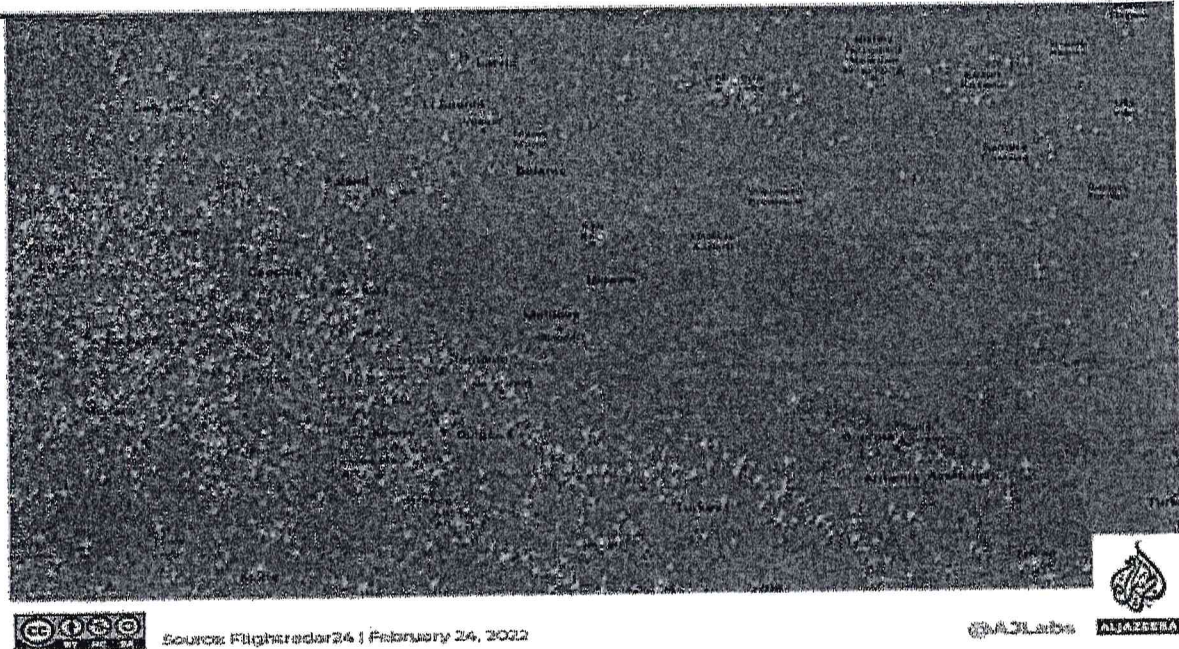
2.2 READ THE INFORMATION BELOW AND ANSWER THE QUESTIONS THAT FOLLOW.

UKRAINE-RUSSIA CRISIS

Ukraine closes airspace to civilian flights

Ukraine **closed its airspace to civilian flights** on Thursday, citing a high risk to safety. Russia also closed its airspace for civilian flights on the **western border with Ukraine and Belarus**. Kyiv says a **'full-scale invasion' by Russia** is under way.

Flights over Europe after the closure of Ukrainian and Russian airspace on February 24.



(<https://www.aljazeera.com/news/2022/2/24/russia-shuts-airspace-along-western-border-with-ukraine-belarus>)

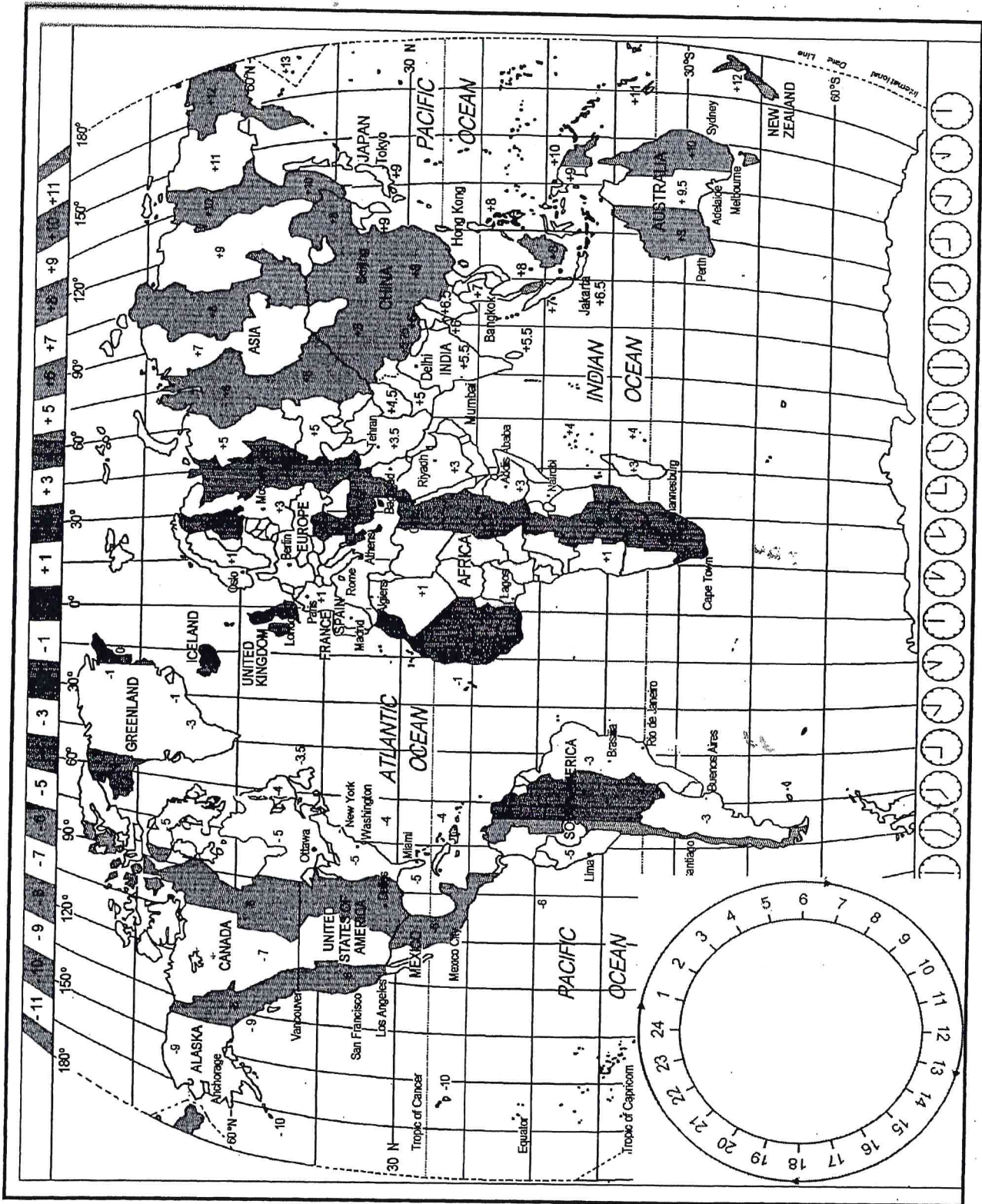
- 2.2.1 What category of political situation does this event fall into? (2)
- 2.2.2 Discuss **TWO** ways in which the economy of Ukraine will be affected as a result of this ongoing problem. 2 x 2 (4)
- 2.2.3 Recommend **TWO** ways on how Ukraine can encourage tourism despite the fears related to the ongoing war. 2 x 2 (4)

[10]

TOTAL SECTION B: [20]

PLANNING

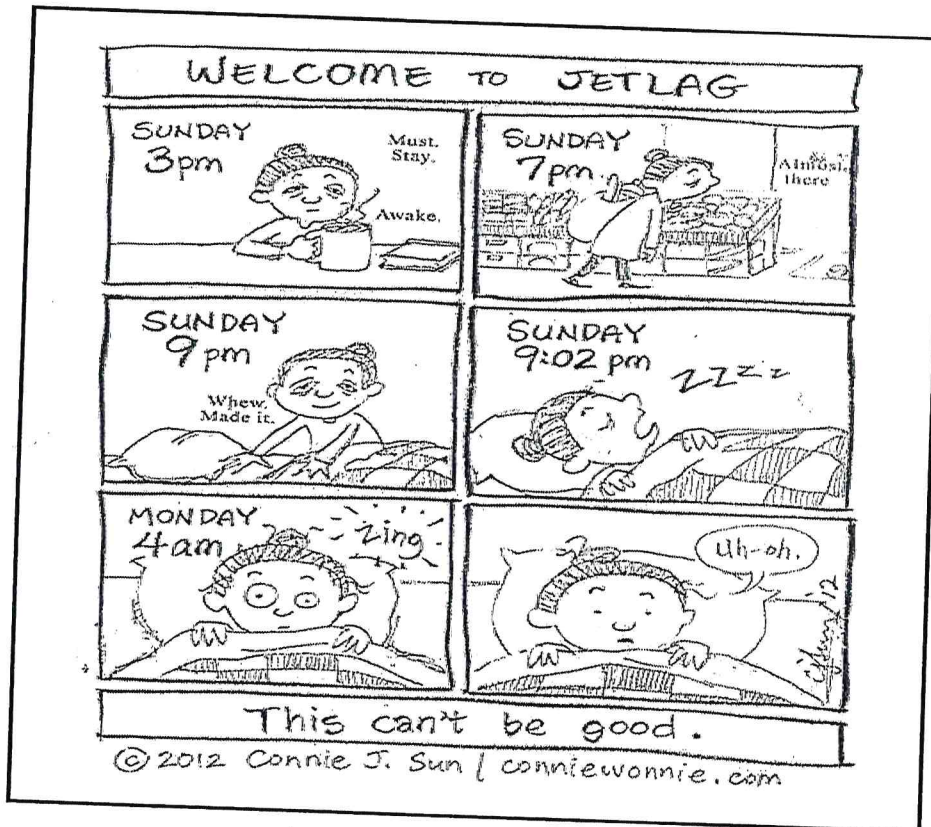
Use the time zone map and the information below to answer the questions that follow.



QUESTION 3 TIME ZONE CALCULATIONS

Use the time zone map provided, when completing the following calculations. Show all workings.

- 3.1 A Johannesburg (South Africa) couple have decided to spend their 10 year wedding anniversary in Bangkok. They will leave South Africa on 27 June at 14:00 from OR Tambo International Airport on a non-stop 11hour 11 minute flight. Calculate their arrival time and day in Bangkok. (4)
- 3.2 Megan who lives in Perth, Australia has decided to travel to Canada in July 2014. Megan will leave Perth at 06:00 on 13 July 2014. She will have a four hour stop-over in Riyadh (Dubai) before travelling on to Canada. Her flight time from Perth to Dubai is 11hours 13 minutes and her flight from Dubai to Canada is 13 hours. Canada is practicing DST. Calculate her arrival time in Canada. (9)
- 3.3 Refer to the cartoon below before answering the questions that follow.



- 3.3.1. Name and explain the phenomenon shown in the cartoon. (3)
- 3.3.2. List **TWO** ways in which this problem can be avoided. (4)

3.7 Study the picture below before answering the questions that follow.

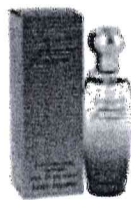


3.7.1 Explain the difference between the immigration and customs section of the airport. (2 x 2) (4)

3.7.2. The customs section says **“Nothing to declare”**

a. Identify whether this would be the Red Channel or the Green channel. Provide a reason for your answer. (2 x 2) (4)

b. From the pictures below, identify **TWO** items that a tourist will be able to carry with them when they pass through the **“Nothing to declare”** section of customs. Write only the names of the answers that you have chosen. (2 x 2) (4)



50ml Perfume



Privately owned gun



2L Cape Harvest wine



Unprescribed medication



Canon camera valued at

R 25 000

3.7.3 **The use of electronic travel documents such as an e-passport, e-boarding pass, etc are becoming increasingly popular in many international airports.**

Briefly discuss how the use of these electronic documents will help to ensure health safety and the security of the passengers in the airport.

(2 x 2) (4)
[16]

3.8 **Read the statement below, released on 4 February 2022 after being confirmed by WHO, and then answer the question that follows.**

Researchers have discovered a new variant of **HIV** called **VB**. This variant is more infectious and transmissible than current HIV strains. Experts say VB is no cause for alarm, and current treatments are still effective against the virus. (04 Feb 2022-<https://www.healthline.com>)

Discuss the above statement in a paragraph focusing on the following points:

- Identify the travel related disease abbreviated by HIV. (2)
- Discuss the impacts that this disease will have on inbound tourists visiting an affected host country. (2 x 2) (4)
- Recommend **TWO** precautions that a host country can offer inbound tourists to avoid the further spread of the disease. (2 x 2) (4)
[10]

3.9 Study the advert below before answering the questions that follow.

BLACK FRIDAY SPECIAL

MAURITIUS

PACKAGE INCLUDES:

- ▶ RETURN AIRFARE EX JNB WITH TAXES
- ▶ 07 NIGHTS ACCOMMODATION
- ▶ BREAKFAST & DINNER DAILY
- ▶ RETURN PRIVATE TRANSFERS

La Margarita From
R10 999 pps

Morie Choisy Coral Azur From
R12 999 pps

Valid for travel
01 Jun - 30 Aug 2022

086 010 9500 | info@onestoptours.co.za

ONESTOP
TRAVEL TOURS

- 3.9.1. Identify whether this advert represents a general or a personal itinerary. Give a reason for your answer. (2)
- 3.9.2. Determine the type of tourist who would be attracted to this advert and package. Give a reason for your answer. (2 x 2) (4)
- 3.9.3. Suggest **TWO** reasons why you think lunch is not included in the tour package. (2 x 2) (4)
- 3.9.4. Suggest why **“return private transfers”** (shuttle services) would attract more people to this package. (2 x 2) (4)
- [14]**

TOTAL SECTION C: 60 MARKS

SECTION D

QUESTION 4

GLOBAL ICONS

IDENTIFY THE FOLLOWING ICONS BY STATING THEIR CORRECT NAME:

WRITE DOWN THE ANSWERS IN YOUR ANSWER BOOKLET BY STATING IT AS FOLLOWS

Example A

4.1.



4.1.A



4.1.B

4.1.C

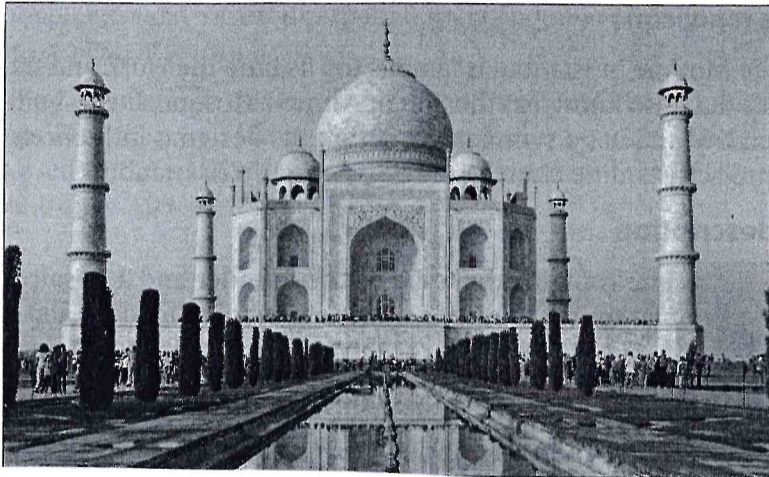


4.1.D



15.

4.1.E.



5 x 2 [10]

4.1.2.

What is the icon that is termed the “playground of the rich and famous”? [2]

4.1.3.

Why was the Taj Mahal built? [2]

4.1.4.

Name the country in which the Wailing Wall is found. [2]

Why is it called this? [2]

4.1.5.

Why do Muslims travel to Mecca? (2)

4.1.6.

List two interesting points about the Parthenon 2 X 2 (4)

4.1.7.

Supply one interesting fact about the Eiffel Tower. (1)

TOTAL D 25 MARKS