

HILLCREST HIGH SCHOOL

ISIZULU ULIMI LOKUQALA LOKWENGEZA (FAL)

NOVEMBA 2014

MOTHER TONGUE



IBANGA LESI-9

GRADE 9

AMAMAKI: 100

ISIKHATHI: AMAHORA AMA-2

LELI PHEPHA LINAMAKHASI AYI-12

IMIYALELO KWABAHLOLWAYO

Lezi phepha lehlukane IZIQEPHU EZINTATHU:

ISIQEPHU A:	Isivivinyo sokuqondisisa.	(30)
ISIQEPHU B:	Ukufingqa	(10)
ISIQEPHU C:	Uhlelo nokusetshenziswa kolimi	(40)
ISIQEPHU D:	Umakhelwane	(30)

1. Fundisisa kahle imiyalelo ngaphambi kokuphendula imibuzo.
2. Phendula YONKE imibuzo ekuleli phepha.
3. Qala isiqephu NGASINYE ekhasini ELISHA bese udweba umugqa emva kwaleso siqephu.
4. Bhala izinombolo zezimpendulo zakho ngale ndlela ezibhalwe ngayo emibuzweni.
5. Shiya umugqa emva kombuzo ngamunye.
6. Bhala ngobunono nangesandla esibonakalayo.
7. Qaphela upelomagama kanye nokwakheka kwemisho.
8. Ungahlukanisa isikhathi obhala ngaso ngokwalezi ziqephu.

ISIQEPHU A:	Imizuzu engama-40
ISIQEPHU B:	Imizuzu engama-20
ISIQEPHU C:	Imizuzu engama-30
ISIQEPHU D:	Imizuzu engama-30

UMBUZO 1

Finda le ndaba elandelayo bese uphendula imibuzo elandelayo.

Ucasulwe Ngozibiza Ngonina Obedlala KuSibaya



Nomzamo Mbatha.

NOKUBONGWA PHENYANE

UBHODLA umlilo owesifazane waKwaMashu, ongunina kaNomzamo Mbatha owaduma ngokudlala indawo kaThandeka Zungu, (**osesithombeni**) emdlalweni Isibaya. Lokhu ngemuva kokuvela kodaba ephephandabeni lesiNgisi izolo lapho owesifazane waseMpumalanga abethi khona uNomzamo yindodakazi yakhe eyaduka ngemuva kokuhamba noyise.

UNkk Manatuku Mbatha wakwa-F, KwaMashu, ongunina kaNomzamo, uthe uzobopha kwasani olufuna ukudicilela phansi isithunzi sendodakazi yakhe ayikhulisa.

Izolo iphephandaba lesiNgisi libike ukuthi owesifazane ongu-Elizabeth Mbatha (48), waKwaMhlanga, eMpumalanga, usefuna ukuhlanganiswa nendodakazi yakhe ahlukana nayo ngo-1998 ihamba noyise axabana naye behlala eClermont, eThekwini.

Lona wesifazane uthi usizwe umakhelwane wakhe owabona uNomzamo elingisa kuSibaya, wamtshela ukuthi ubone indodakazi yakhe wazama

Ikuxhumana nayo njengoba aze abhalela uhlelo iKhumbul' Ekhaya eYagcina ingamphendulanga.

UNkk Manatuku Mbatha uthe ngemuva kokubela kwalolu daba ubelokhu ehola izingcingo zivela kubantu abahlukene bemtshela ukuthi ngabe usewabonile yini amaphepha.

"Angazongidina lowo wesifazane othi ingane yami eyakhe. Nawe ngikhuluma nawe ngoba ngiyakwazi. Angifuni lutho oluzokhulunywa ngomndeni wami nengane yami emaphepheni," kusho uNkk Mbatha.

Uthe ubengakakhulumi noNomzamo ngalolu daba njengoba emlindile ukuthi afike ekhaya bazoxoxa ngalo.

Isolezwe like lahlanguka noNkk Mbatha emcimbini owawenziwe umculi wovokholo uDebora Fraser eziqhenya ngokuphumelela kwengane yakhe.

Wayechaza indlela ayengabhekile ngayo ukuthi uNomzamo angaba kuleli zinga akulo manje ngoba ngisho eyolingisa kuSibaya wayecabanga ukuthi umdlalo ongeke ube nedumela. Isolezwe lithinte uDebora Fraser ukuzwa ukuthi ngempela uNomzamo bamaze nini.

Uthe yena wazi ngisho uyise kaNomzamo uSkuta wakwa-C, kulona leli lokishi osashona.

"Ngimangele ngibona udaba kodwa uNomzamo ukhule simbuka kuyingane yethu sonke. Ubekhuthule ngendlela eyisimanga angimangali ukubona ela ekhona manje," kusho uDebora.

Uthe umfonelile uNkk Mbatha embuza ngalolu daba naye wezwakalisa ukushaqeka kwakhe ngalo.

Isolezwe 28 Okthoba 2014

- 1.1 Ubani igama nesibongo sentatheli esibhalele lombiko? (1)
- 1.2 Lithini igama lo mdlalo le ntokazi ebidlala kuwo kumabonakude? (1)
- 1.3 Umama kaNomzamo owamkhulisa uhlala kuliphi ilokishi? (1)
- 1.4 Ngokwalo mbiko umama waseMpumalanga umazi kanjani uNomzamo? Bhala amaphuzu AMATHATHU. (3)
- 1.5 Isimingaki iminyaka uNomzamo ahlukana nomama u-Elizabeth? Bhala inombolo ngesiZulu. (3)
- 1.6 Chaza lezi zimo zokukhuluma ezilandelayo:
 - 1.6.1 Ukubhodla umlilo (2)

- 1.6.2 Ukushaqeka. (2)
- 17 Ubani igama nesibongo salo mculi owazana noNomzamo? (1)
- 18 Ngokwendaba obani amagama abazali bakaNomzamo bangempela? (2)
- 19 Ungamluleka uthini umngane wakho uma ethola izindaba ezinje lapho kukhona othi ungumzali wakhe alahlekelana naye? Bhala amaphuzu AMATHATHU. (3)
- 110 Ngokwazi kwakho uhlelo “Ukhumbula ekhaya” lwenza musebenzi muni emphakathini? (1)

111 Funda lesi sikhangisi bese uphendula imibuzo elandelayo.

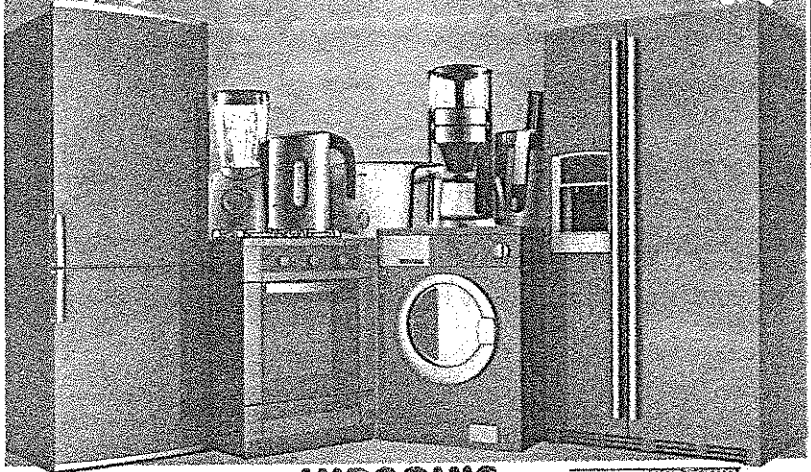
OHAKAZISA IKHISHI LAKHO!

Sekuyiso leso sikhathi sonyaka lapho isolezwe nabakwa Hirsch's bephisana ngezimpahla zasekhishini zakwanokusho: Kukhona ama-fridge, izitofu, ama-microwaves, imishiini yokuwasha, amaketela nama-ayina.

Thenga iphephandaba lakho kusukela ngoMsombuluko, 22 Septhemba 2014, ubheke iziqeshana zeso eziluhlaza nesisodwa esibomvu esiphuma kwiSolezwe ngeSonto.

Zisike lezi ziqeshana bese uzinamathisela ezikhaleni ezikwifomu lokungenela. Njalo ngesonto kuzotonyulwa abanfundi ababe senhlanhleni bazihlomulele ngeminye yalemiklomelo engenhla. Ungaphuthelwa!

Lo mncintiswano uvalwa mhlaka 07 Novemba 2014.



Isolazwe **HIRSCH'S** **Isolazwe**
WE WILL SAVE YOU MONEY

- 1.11.1 Lesi sikhangisi sikhangisani? (1)
- 1.11.2 Yiziphi izinto EZIMBILI ongaziwinela zona lapha? (2)
- 1.11.3 Tomula igama elisho okufanayo nalokhu esikhangisweni.
- 1.11.3.1 Ezinhle kakhulu (1)
- 1.11.3.2 Khetha (1)
- 1.11.4 Obani abaxhasi ababili balo mncintiswano? (2)
- 1.11.5 Abantu babuphi ubulili abangathokozela kakhulu le miklomelo? (1)
- 1.11.6 Chaza kafushane ukuthi kungani ukhethe ubulili obubhale embuzweni (2)
- 1.11.5. (2)

AMAMAKI ESIQEPHU A : 30

ISIQEPHU B: UKUFINGQA

UMBUZO 2

Fundisisa lesi siqeshana esingezansi esixoxa ngebhizinisi eliletha inzuzo bese ufingqa isiqephu ngamaphuzu ayi-7.

IMIYALELO:

1. Bhala amaphuzu ayi-7 ngemisho ephelile. Amagama akho abe phakathi kwangama-50 kuya kwangama-60.
2. Amaphuzu akho awabe nezinombolo kusukela kweyoku-1 kuya kweyesi-7.
3. Bhala iphuzu elilodwa kumusho ngamunye.
4. Sebenzisa amagama akho emishweni.
5. Ekugcineni kwamaphuzu onke owabhalile bhala inani lamagama owasebenzisile.

Unenkampani esiza abanenkinga ake abhekana nayo

UKUNGAWUTHOLI umsebenzi ngokushesha emuva kokuphuthula iziqu zakhe yikona okwamgqugquzela ukuthi avule inkampani ezobhekana ngqo nale nkinga owesifazane waseMgungundlovu.

UNksz Sibusisiwe Kraai (29) wase-Ashdown kuleli dolobha unenkampani ebizwa ngeMalitinne okuyinkampani egxile ekubhekeleni abafundi imisebenzi ezinkampanini ezihlukene uma sebeziphothulile izifundo zabo sebedinga isipiliyoni.

“Ngaba nenkinga yokuthola umsebenzi kulandela ukuqeda iziqu zami zeLocal Government & Development Management. Cishe ngahlala iminyaka emibili ekhaya ngifuna umsebenzi nokwathi sengiwuthola kwangaba yilo engangi wufundele,” kuchaza uNksz Kraai.

Uthe lokhu kwamphatha kabi wabe esezibophezela ngokuthi uma esenamandla kuyomele enze okuthile ukulwa nale nkinga.

“Ngiqale kancane kancane ngagcina sekuyinto engiyenza ngokuzimisela. Yize okwamanje ngisasebenzisana nezikhungo zemfundo ephakeme nokuba yizona ezingikhokhelayo kodwa angibakhiphi inyumbazane nalabo asebekade baphuma ezikhungweni,” usho kanje.

Le ntokazi ithe ayikho into ebuhlungu njengokuthola ukuthi kunenqwaba yentsha engenasicucu ngoba yehlulwa ukuthola ithuba lokwengeza ulwazi (internship) bese kugcina kufana nokuthi ayikaze ilubhade esikhungweni semfundo ephakeme.

“Njengamanje ngisebenzisana nezinkampani ezinkulu ezibalelwa e-150

nezisuke zidinga abafundi abanamakhono ahlukene mina ngizixhumanise namakolishi abafundi bengeze ulwazi babe nesipiliyoni nabo lesi eSifunekayo ukuze umuntu aqashwe ngokugcwele emisebenzini eminingi," kisho uNksz Kraai.

Uhe njengoba sigcine sifezekile isifiso sakhe sokuba nenkampani ezolwa nale nkinga, namanje usenazo ezinye izifiso ngayo le nkampani.

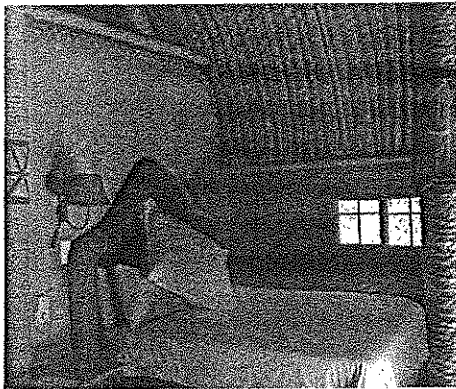
"Ngelinye ilanga ngiyibona isebenzisana nezikhungo zeNingizimu Afrika yinke ingasagxilile KwaZulu-Natal kuphela. Ngikholelwa kakhulu ekutheni una bonke abafundi asebephothulile iziqu zabo bengayithola imisebenzi ngabe izinga lemfundo yakuleli liphezulu kwazise akekho ongadikibaliswa wukungatholakali kwemisebenzi ube unazo iziqu," kuphetha uNksz Kraai.

Isolezwe 28 Okthoba 2014

ISIQEPHU C UHLELO NOKUSETSHENZISWA KOLIMI UMBULO 3

Bukisisa lesi sikhungisi bese uphendula imibuzo ezolandela.

KwaBhekithunga



ezingalalisa abantu abanga-30 iyinye.

- KwaBhekithunga, eMfolozi, indawo ongathokozela imvelo khona KwaZulu Natali.
- Uthi ulele uzwe ukubhonga kwamabhubesi, nokukhala kwezimpisi.
- Sinonogada abaqeqeshiwe abaguduza nawe emahlathini ukuze uzibonele eduze izinyamazane, izinhlobo ngezinhlobo.
- Kudliwa ukudla oktshalwe emasimini akhona.
- Sinezindlu zokulala ezingahlala umuntu oyedwa, ababili kanye nezomndeni. Kukhona nezimbili

Vakashela kwaBhekithunga ukuze uthole iholide ongasoze walikhohlwa.

UCingo: 035 5661023

Feksi: 0865661023

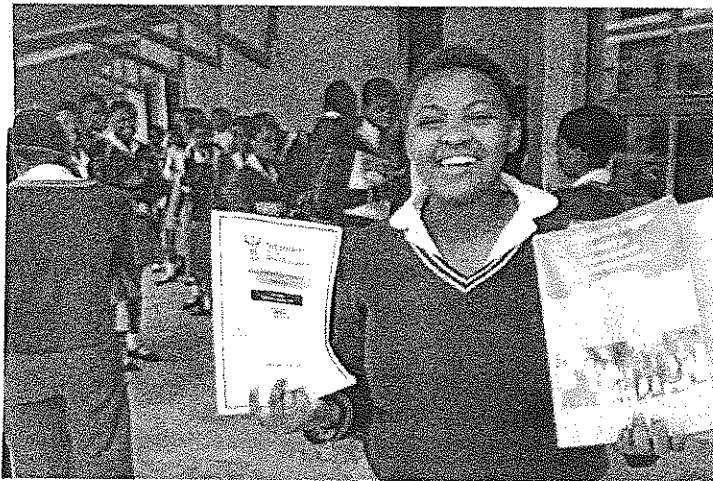
Email: Bhekithunga@umfolozi.co.za



- 3.1 Yini ekhangiswa kulesi sikhangisi? (1)
- 3.2 Khetha impendulo efanele kulezi ozinikiwe:
iKwaBhekithunga isesifundazweni;
A eKapa
B KwaZulu Natali
C eMpumalanga (1)
- 3.3 Bhala izilwane ezimbili ongazizwa zibanga umsindo ebusuku kule ndawo? (2)
- 3.4 IKwaBhekithemba ilungele imindeneni kuphela. Vuma noma uphike weseke le impendulo yakho. (2)
- 3.5 Yiziphi izilwane zasendle EZIMBILI wena ongathokozela ukuzibona uma uvakashele lapha? (2)
- 3.6 Ungaxhumana kanjani nabaKwaBhekithunga uma ufisa ukubavakashela? Bhala izindlela EZIMBILI. (2)
- [10]

UMBUZO 4

Funda isiqephu esilandelayo bese uphendula imibuzo elandelayo.



Abafundi abaningi kabakujabuleli ukuhlolwa ikakhulu labo abafunda ibanga leshumi nambili kule nyanga. Amavila uwabona ngombala uma sekusondele lesi sikhathi sokuhlolwa. Amavila afunda ilanga lonke kodwa kungangeni lutho ngoba basuke sebetatazela. Ungawaphasa wonke amabanga ngamalengiso kodwa uma ungaphumelelanga ibanga le-12 ufana nongafundanga. Cishe abafundi bebanga le-12 abangama -560000 ababhala ukuhlolwa kwabo kulo nyaka. Mina ngibona kukuhle ukuthi umuntu aqale ukuthanda umsebenzi wakhe ukuze aphumelele ebangeni le-12. Kuliqiniso elingephikwe ukuthi bayohlale bekhona abangeke baphumelele ibanga le -12 kodwa baphumelele empilweni. Mina ngithathe isinqumo sokusebenza kanzima.

- 41 Bhala igama eliphikisa elithi **ivila**. (1)
- 42 Likusiphi isigaba samabizo igama **abafundi** (1)
- 43 Bhala isikhuliso segama **ivila** bese ulisebenzisa emshweni. (2)
- 44 Sebenzisa ibizo **isikhathi** emshweni wakho lapho selikhomba ubuncane (isinciphiso) (2)
- 45 Qedela lo musho ngokufaka izivumelwano ezifanele. Bhala umusho wonke. Izingane zimiselayo zi thola ulula umsebenzi wokuphela konyaka. (2)
- 46 Bhala umusho olandelayo ube sebunyen/ubunye Abafundi babhala izifundo eziningi. (2)
- 47 Sebenzisa ibizo elilandelayo emshweni ozakhele wona ukuze liveze umqondo ohlukile kunalowo osesiqeshini.
- 4.7.1 Inyanga (2)
- 48 Sebenzisa ibizo "ilanga" emshweni lapho selingundaweni. (2)
- 4.9 Guqula lo musho olandelayo ube senkathini oyibuziwe. Umfundisi ushumayela esontweni.
- 4.9.1 inkathi esandakudlula ukuvuma (1)
- 4.9.2 inkathi ezofika ukuvuma (1)
- 4.10 Kule misho elandelayo ake uqedele lesi siqeshana ngamagama afanele. Sibhale sonke isiqephu. -**bili** laba bafana bathanda izibalo -**dwa**. Izibalo -**bo** bazenza kushone Ilanga. (3)
- 4.11 Bhala umusho usebenzise ibizo 'isinqumo' usulishintshe laba isabizwana soqobo. (1)

AMAMAKI ESIQEPHU C: 40

UMBUZO :5

Funda lesi siqeshana bese uphendula imibuzo ezolandela.

Sekuyahwalala manje. Nokho akakalilahli ithemba uMdletshe. Uzokuthi engazelele nje athuke sekuqhamuka abantu nosizo. Abe nesineke sokumemeza. Abuye athule. Bese kufika omunye umcabango kuMdletshe. Konje umfula unezipoki ngenxa yabantu abafa bemuka nezikhukhula. Abaziyo bayaye bathi isipoki siyathanda ukubona omunye umuntu efa ngendlela esafa ngayo naso. Ludlale ngaye manje uvalo uMdletshe. Ngcono aphindele emkhulekweni futhi. Nebala aguqe uMdletshe akhale kakhulu kuMdali. Kuthi esakhuleka ezwe okuthile kumthinta lapha ehloombe, wagxuma waya phezulu kwanqamuka umkhuleko. Kwathi uma ebheka akaze abona lutho.

- 5.1 Sithini isihloko sale ndatshana enoMdletshe? (1)
- 5.2 Ukuphi lo Mdletshe njengoba ekhuluma yedwa nje? (1)
- 5.3 Yini edale ukuba abe la ekhona njengamanje? Chaza ngamaphuzu
AMATHATHU. (3)
- 5.4 Wagcina ephume kanjani kule nkinga ayebhekene nayo? Chaza
ngamaphuzu AMATHATHU. (3)
- 5.5 Kwakungu bani isibongo sendoda eyasiza uMdletshe? (1)
- 5.6 Yini eyayixabanise uMdletshe nale ndoda eyamsiza. Chaza ngamaphuzu
AMABILI. (3)
- 5.7 Sithini isijundo esisifundiswa yile ndatshana? Bhala amaphuzu
AMABILI. (2)
- 5.8 Ubizwa ngokuthini umfula owawuzowelwa uMdletshe? (1)
- [15]

UMBUZO 6

Finda lesi siqeshana bese uphendula imibuzo ezosifandela.

Isthombe

'Awu! Waze wamuhle umntanomuntu,' kuphawula uShoba.

'Nguyena umakoti wakwakho lona baba. Nakanjani uzombona namhlanje!'
kuphawula uMhlupheki.

'Wasebenza ndodana. Sicishe nonyoko sahlabela imbuzi emhlophe lapha
enahlombe akho.' Kuhleka ikhehla eliwuShoba.

'Phele baba bengingakaqondani nomaqondana. Nakanjani lona umaqondana,'
kumamatheka uMhlipheki.

'Uyigawule kuphi le nduku ndodana?' kubuza uShoba .

6.1 Ubani igama lojabulela ukuthola intombi lapha? (1)

6.2 Wayithola kanjani yona le ntombi? Chaza ngamaphuzu AMABILI. (2)

6.3 Ubani igama nesibongo sale ntombi eyatholwa uMhlupheki? (2)

6.4 Owakwabani isibongo umama kaMhlupheki? (1)

6.5 Umama kaMhlupheki wayazana kanjani nalo makoti kaMhlupheki. Bhala
Amaphuzu AMABILI. (2)

6.6 Abazali bakaMhlupheki bakuyijabulela le ntombi. Vuma noma uphike
weseke ngamaphuzu AMABILI (3)

6.7 Yaphetha kanjani indaba kaMhlupheki nalo makoti wakhe ayemlindile.
Sekela ngamaphuzu AMATHATHU. (3)

6.8 Chaza ukuthi lawa magama achazani?

Uyigawulephi le nduku ndodana. (1)

[15]

AMAMAKI ESIQEPHU D:30

ISAMBA SEPHEPHA LONKE: 100