

**HILLCREST HIGH SCHOOL**  
**UKUHLOLWA KUKANOVEMBA 2016**  
**IBANGA LESHUMI (GRADE 10)**  
**ISIZULU ULIMI LOKUNGEZELELA (FAL)**  
**IPHEPHA LESITHATHU (PAPER III)**



**ISIKHATHI: 2 Amhr.**

**IMIVUZO: 100**

**QAPHELA**

- Funda **LONKE** iphepha ngaphambi kokuqala ukubhala.
- MUSA ukuxova imibuzo nezimpendulo makuhambisane njengasephepheni.
- Hlukanisa kahle **ISIKHATHI** ukuze uqede kahle.
- Bhala umsebenzi **OHLANZEKILE**.
- Sebenzisa isiZulu esivumelekile.
- Funda **LONKE** iphepha uma uqeda ukubhala.

**KUBAMBA EZINGELAYO!!!!!!**

**IMIYALELO KUMFUNDI**

1. FUNDISISA **LONKE** IPHEPHA NGAPHAMBI KOKUQALA  
UKUBHALA
2. QALA **IKHASI ELISHA** ZONKE IZIQEPHU

ISIQEPHU A

**INDABA**

- **UMBHALO OMUDE** 50

ISIQEPHU B

- **IMIBHALO EMIDE EDLULISA IMIYALEZO** 30

ISIQEPHU C

- **IMIBHALO EMFUSHANE** 20

## ISIQEPHU A

### INDABA

1. Khetha isihloko esisodwa kulezi ezilapha ngenzansi ubhale ngaso indaba yakho engamagama asukela emagameni ayi-190 kuya ema-240.
- 1.1 Ngazithola sengiphakathi esixukwini esasibhikishela uthishanhloko wesikole sethu yize ngangingahambisani neze nesenzo sozakwethu engifunda nabo. Bhala indaba usilandise ngokwakwenzeka ngalolu suku. [50]
- 1.2 Umama wayeloku esihlebeli ukuthi kungenzeka sisuke lapho esasihlala khona ngoba ubaba usenyuselwe esikhundleni esiphezulu emsebenzini okusho okuthi usezothola umuzi omusha. Kwakungamaholide kaMfumfu sihamba siya ePitoli siyobona ikhaya lethu elisha eliyisitezi. Kwakungathi ngiyaphupha ngilele. Kwakungewona umuzi lowaya, kwakungudukatholwe. Bhala indaba uyichaze le ndlu. [50]
- 1.3 Namanje ngisasho ukuthi kungcono kabi ukufundisa ingane yomfana kunengane yontombazane ethi ingaqeda isikole ihambe iyogana ungasazuzanga lutho wena njengomzali okade eyifundisa. Bhala uhlaziye lesi sihloko. [50]
- 1.4 Bhala ubeke umbono wakho ngobubi nobuhle bokushada umshado wesithembu. [50]
- 1.5 Amathe abuyela kwasifuba komakhelwane esefunde wagogoda uNhlo mulo emva kokuciciyela kwabazali bakhe kunzima. [50]

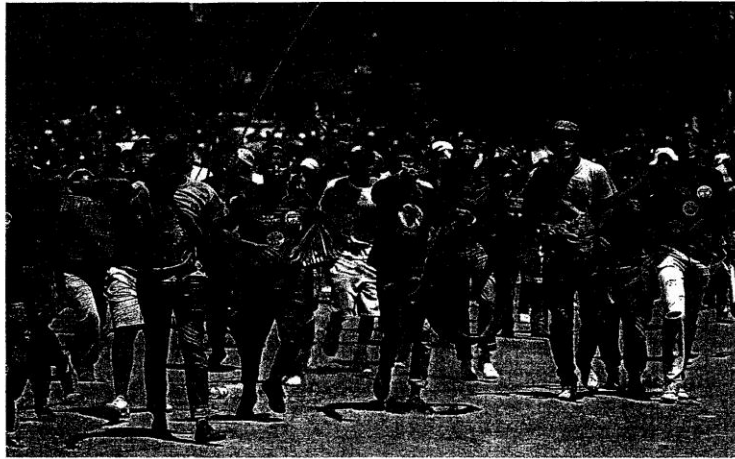
1.6.3



[50]

1.6 Buka izithombe ezilandelayo bese ukhetha esisodwa kuzona ubhale ngaso indaba yakho ehambelana naloko okwenzeka kuso. Khumbula ukuthi kufanele uyinike isihloko sakho oziqambele sona wena.

1.6.1



1.6.2



## ISIQEPHU B

### INCWADI

1. Funda izihloko ezilandelayo bese ukhetha **ESISODWA** ubhale ngaso incwadi yakho amagama asukela ema-**80** kuya e-**100**.
  - 1.1 Kade uxoxelwa umalumekazi wakho ukuthi umzala wakho uqoqe inqwaba yezindondo kade kunomcimbi wokuvalalisa umatikuletsheni esikoleni sakhe. Mbhalele **INCWADI** umtshela ukuthi unjani ukuziqhenya ngaye nokuthi isenzo sakhe sisho ukuthini kinina eniza emva kwakhe. [30]

### NOMA

- 1.2 Abazali bakho bakucelile ukuthi ubuye esikoleni ofunda uhlale kuso ukuze uzobheka ekhaya ngempelasonto beya emhlanganweni. Wena waqoqa abangani bakho nazozijabulisa emzini wabo ungacelanga. Uma bebuya babona kunezimpawu eziningi ezikhombisa ukuthi noma bona bekukhombisile ukuthi bayakuthemba bakushiya nekhaya, wena kukuhlulile ukubona loko ukuthi bayakwethemba wenza ukungethembeki. Bhala **INCWADI** yokukhombisa ukuthi uyazibona ukuthi wonile. [30]

### NOMA

- 1.3 Funda isikhangiso somsebenzi esilapha ngenzansi bese ubhala **INCWADI YOKUCELA UMSEBENZI** ekhombisa ukuthi kungani kukufanele ukuthi uqashwe kulo msebenzi okhangiswe lapha.

**ILANGA LASENATALI**  
15 kuNhlaba 2010  
**EYAMI NAWA CLOTHING**  
ISIKHALA SOMSEBENZI WETOHO LOKUDAYISA  
ESITOLO - IZINGANE ZESIKOLE NGAMAHOLIDI  
Abafisa ukufaka izicelo babe:

- Abafundi bebanga le-10 kuya kwele-12
- Babe nomazisi kumbe isitifiketi sokuzalwa

Thumela incwadi yesicelo neyokuzichaza (CV) ngaphambi komhla zingama-31 kuNhlaba 2010 kuleli kheli: Eyami Nawe Clothing, Shop 15, Umlazi Centre, Umlazi, 4031

[30]

**NOMA**

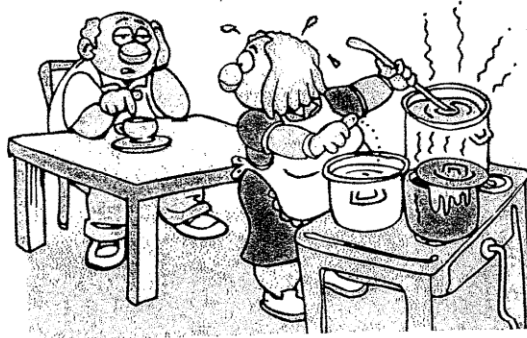
- 1.4 Ukhulele ekhaya lapho kuhlala khona izingane ezingenabazali kanyenabantu abadala. Wena unogogo obefana nogogo wakho wegazi obewuhlala umvakashela njalo endlini yakhe. Ubekuxoxela yonke into ngaye kusuka ebunganeni bakhe, lapho afunda khona, umsebenzi ayekade ewenza engakahlali kuleli khaya. Uthe uma edlula emhlabeni umphathi wekhaya wacela wena ukuthi ubhale **UMLANDO KAMUFI** wakhe.
- [30]

**NOMA**

- 1.5 Umngani wakho ungomunye wabafundi baseYunivesithi yaseMangosuthu eMlaza abangazange bawungenele umbhikisho wabafundi bamaYunivesithi aseNingizimu Afrika okuthi ayingakhokhelwa imfundo ephakeme. Bhala **INGXOXO** obenayo naye ekuchazela ukuthi yini eyenze bona bangateleka. Nawe beka owakho umbono mayelana nokungateleki kwabo.
- [30]

**NOMA**

- 1.6 Buka isithombe esilandelayo bese ubhala **INGXOXO** ephakathi kwalaba ababili abakuso. Khumbula ukuthi kumele uqambe isihloko esizohambelana nengxoxo yakho.



[30]

### ISIQEPHUC

1. Funda izihloko ezilandelayo bese ukhetha **ESISODWA** ozobhala ngaso amagama anga-**60** kuya kwanga-**80**.

1.1 Emva kokuyofundela ukuzivulela ibhizinisi lakho esikhungweni semfundo ephakeme, usuqale ibhizini lokwakha izimonyo zabantu besilisa nabesifazane ezikwazi ukuthengwa abantu abadla izambane likapondo kanye nalabo abangaholi kakhulu. Bhala **ISIKHANGISI** ozosifaka ezindaweni ezahlukene zokuxhumana. [20]

### NOMA

1.2 Kade wawucela iminyaka yonke kubazali ukuthi uma kuhamba intsha yasesontweni nawe uhambe. Ngalo nyaka bakuvumelile abazali ukuthi uhambe. Bhala **IDAYARI** yaloko ebenikwenza ekhempini yentsha kusuka ngoLwesihlanu kuze kube iSonto. [20]

### NOMA

1.3 Amaqembu emidlalo esikoleni senu ahambile amasonto amabili ayodlala nezikole ezahlukene eziphuma emazweni ahlukene ase-Afrika eZimbabwe. Bhalela abazali bakho **IPHOSIKHADI** ubaxoxele ngalolu hambo. [20]

**ISAMBA 50 + 30 + 20 = [100]**