

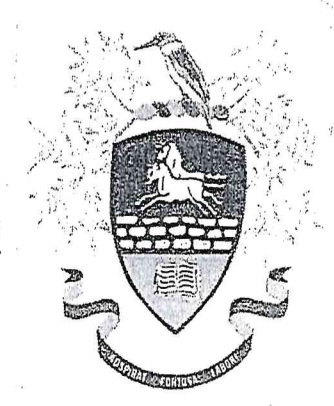
HILLCREST HIGH SCHOOL

UKUHLOLWA KWAMANQAMU KUKANOVEMBA 2019

ISIZULU ULIMI LOKWENGEZELELA

IBANGA LESHUMI ( GRADE 10)

IPHEPHA LESITHATHU ( PAPER 3)



MOTHER TONGUE SPEAKERS ONLY

ISIKHATHI : 2 AMAHORA

AMAMAKI: 100

IMIYALELO KWABAHLOLWAYO.

- Fundisisa lonke iphepha ngaphambi kokuphendula imibuzo.
- Khetha imibuzo kanjengoba uyalelwe.
- Bhala usebenzisa upelomagama olufanele.
- Bhala usebenzisa ulimi lwesiZulu lwempela.
- Bhala umsebenzi ohlanzekile.

## ISIQEPHU A

### INDABA

1.Khetha **ISIHLOKO ESISODWA** kulezi ezilandelayo bese ubhala ngaso kufike emagameni angama -190 kuya emagameni angama- 240.

QAPHELA : Uhlaka luba sekhasini lwalo lodwa ngaphambi kwendaba.

1.1.Mhla Ngisinda Ekufeni. (50)

1.2. Umbono Wami Ngokukhishwa Kwesitifiketi Sebanga Lesi- 9. (50)

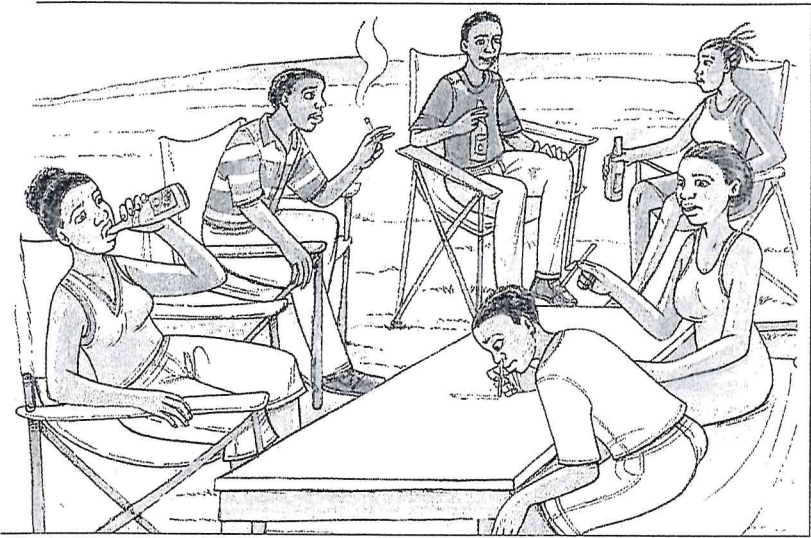
1.3.Uhlobo Lwengqephu Engiluthandayo. (50)

1.4.Ubuhle Nobubi Bokusebenzisa Izinkundla Zokuxhumana (50)

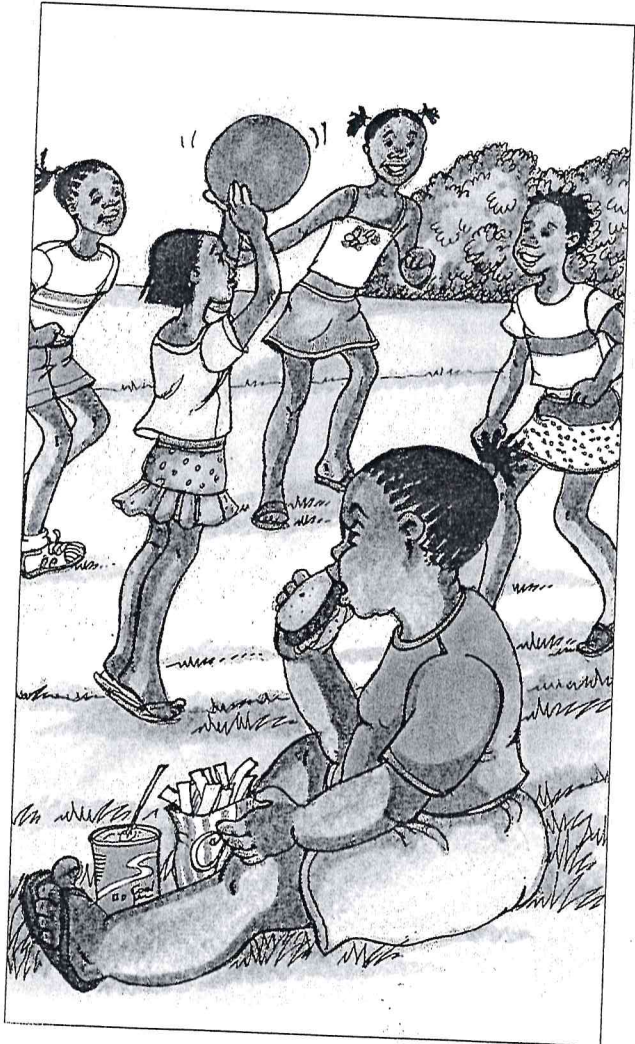
1.5. Ukuzethemba (50)

1.6.Khetha isithombe **ESISODWA** kulezi ezilandelayo bese ubhala indaba ngaso.Yinike isihloko esifanele indaba yakho.

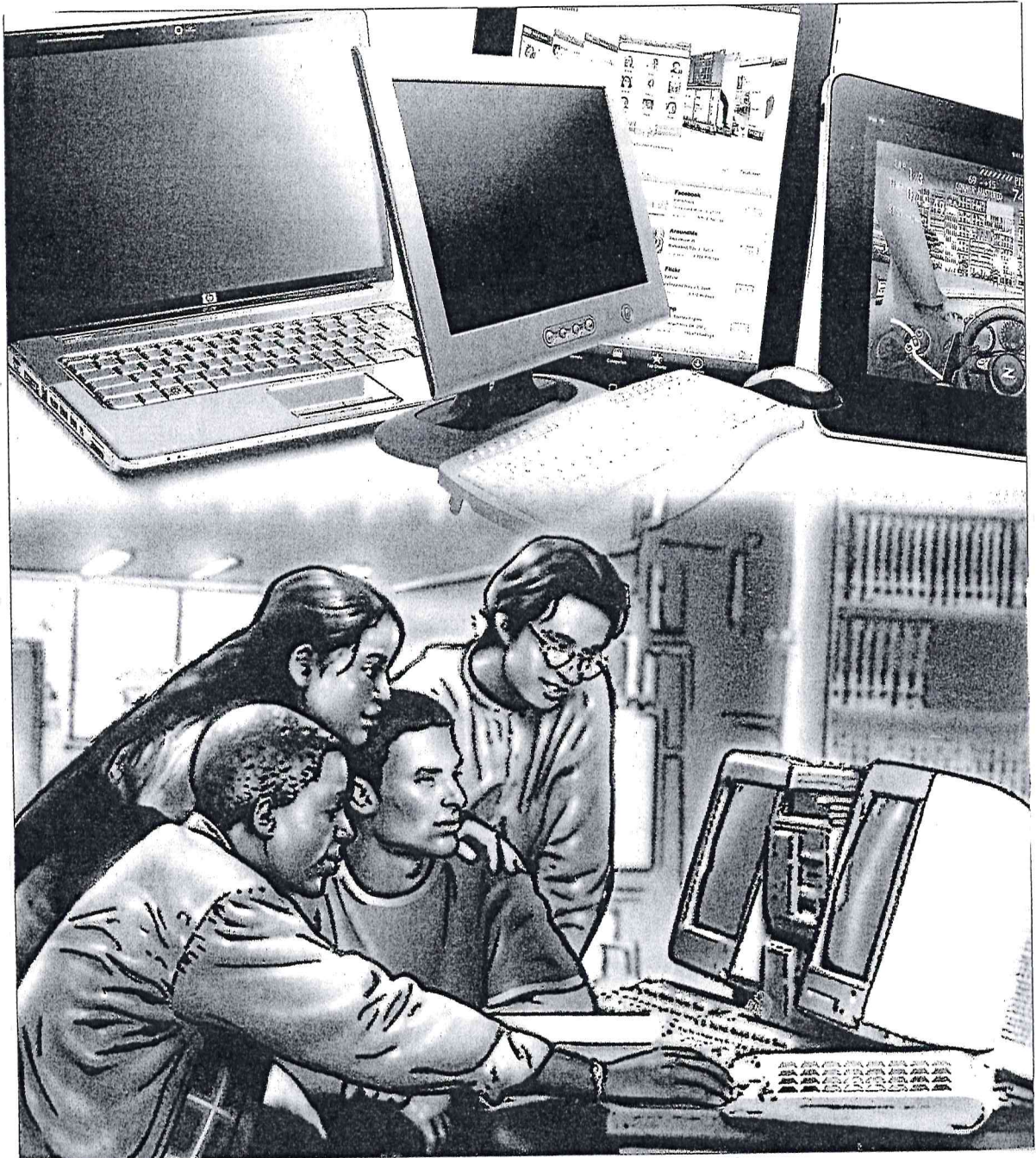
1.6.1.



1.6.2.



1.6.3.



## ISIQEPHU B:IMIBHALO EMIDE EDLULISA IMIYALEZO

2. Khetha isihloko **ESISODWA** ubhale ngaso kube ngamagama angama-80 kuya kwayi – 100.

### INCWADI YOBUNGANE

2.1. Umngane wakho uthole umfundaze wokuyofunda kwelaseMelika. Mbhalele **incwadi** umhalalisele bese umeluleka ngendlela okumele aziphathe ngayo. (30)

### UMLANDO NGOMUFI

2.2. Umzala wakho enikhula Kanye naye udlule emhlabeni ngokukhulu ukuzuma. Umndeni wakho ucele wena ukuba ubhale umlando ozowufunda wena ngosuku lomngcwabo. Bhala phansi-ke lo **mlando**. (30)

### INGXOXO

2.3. Esikoleni ujwayele ukufika ngemuva kwesikhathi sokungena kwesikole ngenxa yezinkinga onazo ekhaya. Uthishanhloko ukubizele ehhovisi lakhe ukuzwa ngembangela yalokhu kufika emva kwesikhathi kaningi. Bhala phansi **ingxoxo** enibe nayo. (30)

## ISIQEPHU C: IMIBHALO EMIFUSHANE EDLULISA IMIYALEZO

3.Khetha isihloko **ESISODWA** ubhale ngaso ngamagama angama- 60 kuya kwangama- 80.

### 3.1.ISIMEMO

Abazali bakho bazokwenzela udadewenu omdala umcimbi wokumvalelisa njengoba eyofunda eNyuvesi yaseKapa. Bacele wena ukuba ubabhalele isimemo esizokuya ezihlotsheni nabangani salo mcimbi. Bhala phansi ke lesi **simemo**. (20)

### 3.2. IDAYARI

Esikoleni sakho ningabaphathi babafundi ( prefects), Nihlelelwe uhambo lwezinsuku ezinhlanu ukuze nijwayelane nikwazi ukusebenzisana.Bhala **idayari** yalokho enizobe nikwenza. (20)

### 3.3. IRESIPHI

Uphe umngani wakho isemishi obuzenzele lona lomphako. Umngane wakho uthe liconsisa amathe leli semishi , ube esecela ukuba umnike iresiphi yalo ukuze ezozenzela naye.Mbhalele – ke **iresiphi** yesemishi lakho. (20)

**AMAMAKI ESEWONKE : 100**