

**ISIZULU ULIMI LOKUQALA LOKWENGEZA  
(FAL)**

**IPHEPHA LESITHATHU (P3)**

**IBANGA LE- 11**

**AMAMAKI:** 100

**SIKHATHI:** Amahora ama-2

Leli phepha linamakhasi ayi-7

**IMIYALELO KWABAHLOLWAYO**

1. Leli phepha lehlukane IZIQEPHU EZINTATHU:  
ISIQEPHU A: Indaba (50)  
ISIQEPHU B: Imibhalo emide edlulisa imiyalezo (30)  
ISIQEPHU C: Imibhalo emifishane edlulisa imiyalezo (20)
2. Phendula umbuzo OWODWA esiqeshini NGASINYE.
3. Bhala ngolimi ohlolwa ngalo.
4. Qala umbuzo NGAMUNYE ekhasini ELISHA.
5. Hlela umsebenzi wakho (uhlaka) ngamaphuzu noma ngebalazwe (mind map), ulungise amaphutha bese uyawufundisisa. Uhlelo/Uhlaka MALANDULELWE umbhalo ngamunye.
6. Ukuhlela makukhonjiswe ngokubhala igama elithi uhlelo/uhlaka bese kuyethulwa. Kuyancomeka ukuba kudwethshwe umugqa phezu kwemisebenzi yonke yokuhlela.
7. Uyayalwa ukuba usebenzise isikhathi sokubhala ngale ndlela elandelayo:  
ISIQEPHU A: Amaminithi angama-60  
ISIQEPHU B: Amaminithi angama-30  
ISIQEPHU C: Amaminithi angama-30
8. Bhala izinombolo zezimpendulo ngendlela ezihlelwe ngayo kuleli phepha.
9. Nikeza impendulo ngayinye isihloko esifanele
10. Ungazibali izihloko nezihlokwana lapho usubala inani lamagama omsebenzi wakho.
11. Bhala ngobunono nangesandla esifundekayo.

**ISIQEPHU A: INDABA****UMBUZO 1**

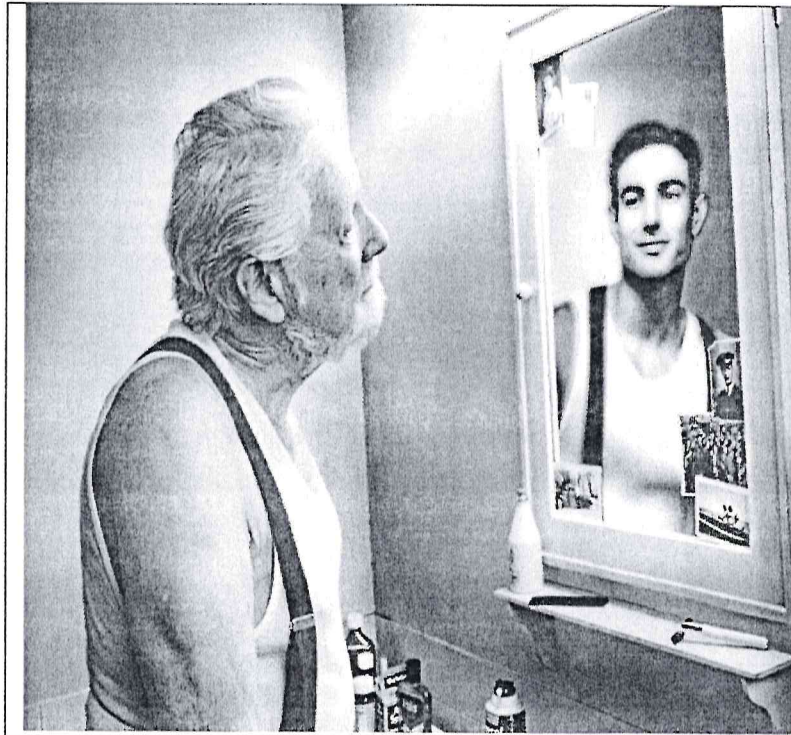
Khetha isihloko ESISODWA ubhale ngaso indaba ibe ngamagama ayi-190 kuya kwangama-240.

**QAPHELA:** Bhala uhlaka lwendaba yakho libe sekhasini lalo lodwa.

- 1.1 Umuntu Owangisiza Ngisenkingeni. [50]
- 1.2 Intsha Yanamuhla. [50]
- 1.3 Lesi Simo Sezulu Sashiya Usizi Olukhulu Emazweni Amaningi. [50]
- 1.4 Ubuhle Nobubi Bokushayela Imoto Usemncane. [50]
- 1.5 Nginje Nje Nje Imikhuba Yami. [50]
- 1.6 Bukisisa lezi zithombe ezilandelayo bese ukhetha ESISODWA ubhale ngaso indaba. Nika indaba yakho isihloko.

**QAPHELA:** Indaba yakho mayihambisane nesithombe/nokwenzeka esithombeni.

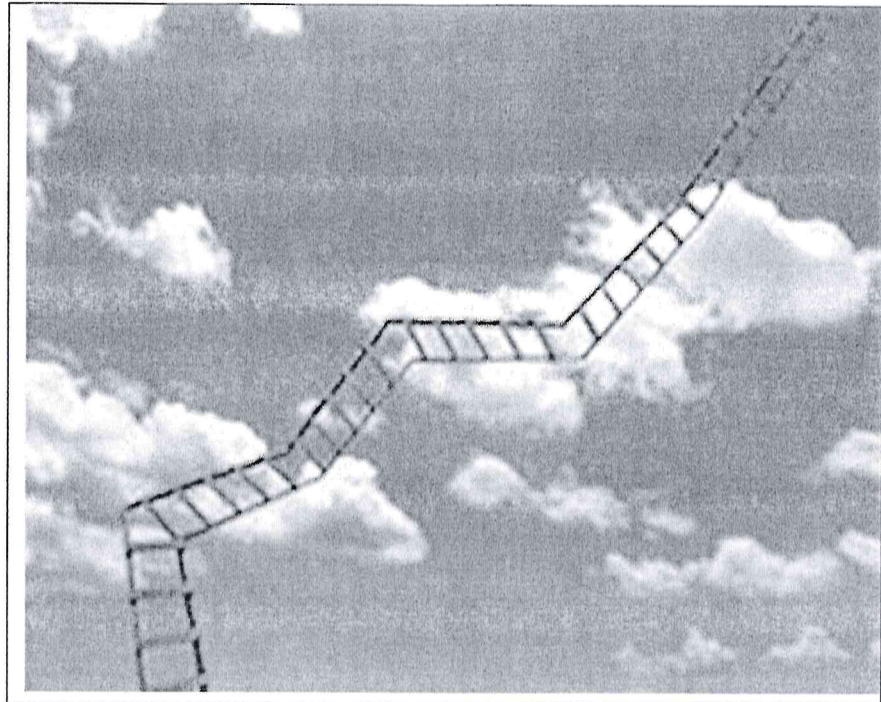
1.6.1



[Sicashunwe: [www.gettyimages.com](http://www.gettyimages.com)]

[50]

1.6.2



[Sicashunwe: [www.googlepictures.com](http://www.googlepictures.com)]

[50]

1.6.3



[Sicashunwe: [www.gettyimages.com](http://www.gettyimages.com)]

[50]

**AMAMAKI ESIQEPHU A: 50**

**ISIQEPHU B: IMIBHALO EMIDE EDLULISA IMIYALEZO****UMBUZO 2**

Khetha isihloko ESISODWA kwezilandelayo ubhale ngaso kube ngamagama angama-80 kuya kwayi-100.

**2.1 INCWADI YOBUNGANI**

Umngani wakho ukubhalele incwadi ekutshela ukuthi ufuna ukusiyeka isikole aqhubeke nohweba ku-inthanethi (forex) Wena awuhambisani nalesi sinqumo sakhe.

Bhala **incwadi** uphendule umngani wakho uveze imibono ngalokhu afuna ukukwenza.

**[30]****2.2 UMLANDO NGOMUFI**

Umalumekazi wakho ushone engozini yemoto. Umndeni ucele ukuba ubhale umlando wakhe ozofundwa enkonzweni yomngcwabo ulekelelwa umndeni.

Bhala **umlando ngomufi**.

**[30]****2.3 I-AJENDA NAMAMINITHI OMHLANGANO**

Ikomidi eliphethe abafundi (RCL) esikoleni senu belinomhlangano lixoxa ngokungenziwa ukuthuthukisa izibalo zabafundi abazibandakanya nezemidlalo esikoleni kanye nemiphumela emihle.

Bhala **i-ajenda namaminithi** alo mhlango njengoba ungunobhala waleli komidi.

**[30]****2.4 INKULUMO ELUNGISELELWE**

Uthisha wakho obekufundisa isiZulu uthole isikhundla sokuba uthishomkhulu kwesinye isikole. Othisha, abafundi kanye nabazali bahlele ukumenzela umcimbi wokumvalelisa

Bhala **inkulumo elungiselwe** ozoyethula emcimbini wokumvalelisa njengoba abafundi becele wena.

**[30]****AMAMAKI ESIQEPHU B: 30**

**ISIQEPHU C: IMIBHALO EMIFISHANE EDLULISA IMIYALEZO****UMBUZO 3**

Khetha isihloko ESISODWA ubhale ngaso kube ngamagama angama-60 kuya kwangama-80.

**3.1 ISIKHADI LESIMEMO**

Udadewenu omdala uzobe eshada mhla zingama-22 Disemba 2019.

Bhala **ikhadi lesimemo** elizomema abangani nezihlobo ukuba beze kulo mcimbi. **[20]**

**3.2 IDAYARI**

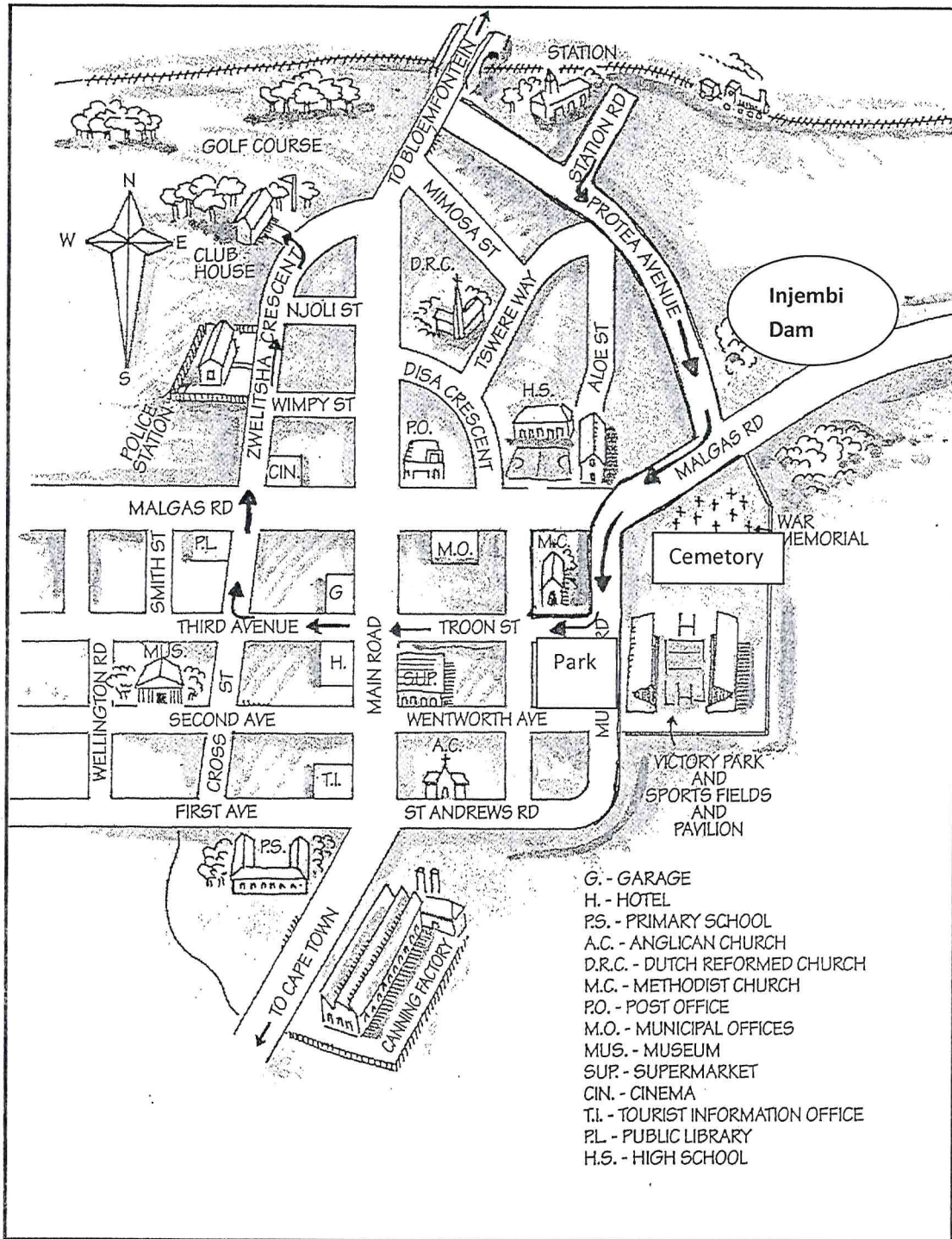
Ubuhambele umcimbi wama-Grammy Awards obuseMelika njengoba umfowenu eculela iMgungundlovu Gospel Choir.

Bhala **idayari** yezinsuku ezi-5 ngezinto obuzenza ngenkathi useMelika. **[20]**

**3.2 INKOMBANDLELA**

UDj Gqomu usuka esiteshini sesitimela uya e-Club House manje akayazi indlela eya khona.

Sebenzisa le **nkombandlela** esekhasini elilandelayo ukumyalela indlela,ngokulandele imicibisholo.



[www.maps.com](http://www.maps.com)

[Sicashunwe ku-

[20]

AMAMAKI ESIQEPHU C:  
AMAMAKI ESEWONKE:

20  
100

