



Hillcrest High School
Umnyango wesiZulu

IBANGA LESI-9

ISIZULU ULIMI LOKUQALA LOKWENGEZA (FAL)
IPHEPHA LESIBILI (P2)
NOVEMBA 2022

AMAMAKI: 70

ISIKHATHI: Amahora ama-2

Leli phepha linamakhasi ayi-9

Ikhasi - 1 kwayi- 9

IMIYALELO NOLWAZI KWABAHLOLWAYO

1. Leli phepha lehlukaniswe IZIQEPHU EZINE:
ISIQEPHU A: Isivivinyo sokuqondisisa (25)
ISIQEPHU B: Ukufingqa (10)
ISIQEPHU C: Isikhangiso (15)
ISIQEPHU D: Uhlelo nokusetshenziswa kolimi (20)
2. Phendula YONKE imibuzo ekuleli phepha.
3. Qala isiqephu NGASINYE ekhasini ELISHA.
4. Dwebela umugqa emva KWESIQEPHU NGASINYE.
5. Bhala izinombolo zezimpendulo kahle ngendlela ezihlelwe ngayo kuleli phepha lemibuzo.
6. Shiya umugqa emva kombuzo ngamunye.
7. Qaphela upelomagama kanye nokwakheka kwemisho.
8. Ukwabiwa kwesikhathi okuncomekayo:
ISIQEPHU A imizuzu engama-40
ISIQEPHU B imizuzu engama-30
ISIQEPHU C imizuzuz engama-20
ISIQEPHU D imizuzu engama-30
9. Bhala ngobunono nangesandla esifundekayo.

ISIQEPHU A: ISIVIVINYO SOKUQONDISISA

UMBUZO 1

1. Fundisisa lesi siqephu esingezansi bese uphendula imibuzo ezolandela.

UMBHALO A OFUNDWAYO

Ngifunde lukhulu kule projekthi

Kukhulu esikufunda emisebenzini wesikole ngethemu yesithathu. Cishe yonke imisebenzi yale themu ihlola ikhono lokusebenzisana. Kule themu esivela kuyo ngifunde lukhulu ngami kanye nokusebenzisana nabanye abantu. Ziningi izingqinamba engihlangabezana nazo uma usebenza nabantu abahlukene.

Igama lami nginguSinothile Ngubo ofunda ibanga lesi-9 lapha eTholulwazi High School. Esikoleni esiselokishini lase Masiko eNtshonalanga yasoPhongolo. Yize isikole sethu singenazo izinsizakufunda eziningi njengalezi zikole zasemadolobheni kodwa umsebenzi uyenzeka. Kuningi engikufundile kulo nyaka emsebenzini weprojekthi ebesinikwe yona. Ngizothi kube kuningi okuhle engikufundile njengoba sikwaze ukwethula umsebenzi wethu ngesikhathi esinqunyiwe. Uma nje ngingakuxoxela ngokwakumele sikwenze ngokwezigaba zeprojekthi. Isigaba sokuqala kwakufanele senze ucwaningo bese sinikwa imiklomelo ngalokho. Isigaba sesibili kwakungukubhala umsebenzi wethu sisebenzisa ulwazi esiluthole ngesikhathi sicwaninga nakho lokhu kunomklomelo wako. Isigaba sesithathu kwakungukwethula umdlalo wethu lo ebesizibhalela wona.

Ake ngibhekise esigabeni sokuqala lapho esavakashela emtatsheni wolwazi sasebenzisa amakhompiyutha esikole. **Ngangikuthatha kancane** ukusebenzisa ikhompiyutha ngoba ngangikwazi ukusebenzisa umakhalekhukhwini. Ngehluleka ngancama ukugcina umsebenzi ebengiwbheka enjinini enkulu ebizwa Google. Ngaze ngasizwa uthisha osebenza emtasheni wolwazi. Wakwenza kwaba into elula nje lapho usebenzisa izinombolo obhalise ngazo esikoleni kanye neminingwane eyimfihlo yakho. Cishe kwangithatha izinsuku ezimbili ukukwazi ukusebenza ngokuzethemba. Emtatsheni kawubangwa umsindo. Imithetho yakhona iqinile uma uyiqhathanisa neyaseklasini. Bonke othisha bakhona bayesabeka.

Ngesikhathi sesenza isigaba sesibili uthisha wethu wasehlukana ngamaqembu anabantu esasizikhethela bona nesibathandayo. Ngangicabanga ukuthi konke kuzoba lula njengoba nganginabangani bami eqenjini lethu. Abanye abangani bahle uma nizihlalele nixoxa nje ngaphandle kwekilasi. Uma sekuza emsebenzini wesikole bangamavila futhi beneliswa imiklomelo emincane abayitholayo. Mina, ubaba engangibulala ngenduku uma ngingathola amamki amancane esiZulu

njengoba kungulimi engilukhulumayo ekhaya. Sakhe iqembu lika-whatapp ukwenzela ukuxhumana uma sisemakhaya sikhulume ngomsebenzi wesikole. Ukuxhumana kuWhatsApp kwakubukeka kungumqondo omuhle ngesikhathi sisawuhlela. Izinkinga zanda lapho abanye bengenawo amadata nobekwenza singaxhumani kusenesikhathi. Ngaze ngacabanga ukuthi mhlawumbe kabafuni ukwenza umsebenzi wesikole. Kodwa sigcine sikwazile ukuwubhala ngempumelelo umdlalo wethu.

Lwagcina lufikile usuku lokwethula umdlalo wethu. Ngendlela uvalo ebelingishaya ngalo ngesikhathi sesizokwethula lokho ebesikade sikubhala, ngize ngacabanga ukuphutha esikoleni. Inkinga yami ukuthi umama usebenzela ekhaya futhi ubengeke angivumelele ngihlale ekhaya uma ngingaguleli ukuya kwadokotela. Umdlalo wethu ubufundisa ngokuba nabangani abasizanayo uma kuthathathwa izinqumo ngempilo. Mina bengidlala indawo kaSilondiwe Masuku waseNyonikayiphumuli. Sonke sidlale kahle nesicabanga ukuthi sithole umklomelo ophezulu kakhulu. Akekho okhohlwe ngamagama abekufanele awasho. Sabona ngendlela okwashaywa ngalo ihlombe ukuthi senze kahle.

Uma sengibheka emuva mhla sinikezwa le projekthi. Ngiyabona ukuthi le projekthi ingifundise lukhulu ngami kanye nabangane bami. Ingifundise ukusebenza kusenesikhathi. Iphinde yangifundisa ukubaluleka kokusebenzisana.

- 1.1 Ubani isibongo osibhalele le ndaba? (1)
- 1.2 Ubenza iprojekthi yasiphi isifundo? (1)
- 1.3 Le projekthi ababeyenza ibinezigaba ezingaki? (1)
- 1.4 Bhala igama lesikole lapho kufunda khona uSinothile? (1)
- 1.5 Wathokozela siphi isigaba sale projekthi? Sekela impendulo yakho. (2)
- 1.6 Yiziphi izinkinga EZIMBILI uSinothile ahangabezana nazo esigabeni sokuqala sale projekthi? (2)
- 1.7 Chaza isimo sokukhuluma esibhalwe ngokugqamile kulo musho olandelayo
Ngathatha kancane (2)
- 1.8 Ngokucabanga kwakho, iyiphi indlela elungile yokwehlukana abafundi ngamaqembu? Sekela impendulo yakho. (2)
- 1.9 Ungameluleka ukuthi enze njani umfundi onovalo lokwethula umdlalo phambi kwezibukeli. Bhala iphuzu ELILODWA. (2)
- 1.10 Wayedlala indawo kabani uSinothile emdlalweni wabo? (2)
- 1.11 Tomula umusho esigabeni sesihlanu igama elichaza ukugula kakhulu. (2)

Bukisisa UMBHALO B bese uphendula imibuzo ezolandela

UMBHALO B (Obukwayo)



[Itsetfwe ku-www.food.com]

- 1.2.1 Uyini umsebenzi walomshini okubekwe kuwo loku kudla? (1)
- 1.2.1 Kungani ukudla okesesithombeni A kuthandwa ngabantu abaningi? (2)
- 1.2.3 Luchaza ukuthini lolu phawu oluphezulu esithombeni B? (2)
- 1.2.4 Ngaphandle kokudla Ukudla okusesithombeni B, yini ongayenza ukugcina umzimba wakho unempilo? (2)

[25]

ISIQEPHU B: UKUFINGQA UMBUZO 2

Fundisisa UMBHALO C ongezansi bese uwufingqa ngamaphuzu ayi-7 ubhale ngokubaluleka kolwandle.

IMIYALELO

1. Bhala ngemisho ephelile. Amagama angeqi/angadluli kwangama-60.
2. Imisho yakho mayibe nezinombolo kusukela kweyoku-1 kuya kweye-7.
3. Bhala iphuzu elilodwa emshweni ngamunye.
4. Ekugcineni kwamaphuzu wonke owabhalile, bhala inani lamagama owasebenzisile.

UMBHALO C (OFUNDWAYO)

Ukuna kwemvula ngesikhathi sasehlobo sithole abantu abaningi bengayilindele imvula engaka. Muningi umonakalo owenzekile ezindaweni eziningi kwagcina ngokushona kwabantu kwalimala nempahla. Zikhona izinto ebezingenziwa ukunciphisa lokhu.

Abantu abaningi balimala kakhulu uma besemigwaqweni noma ngaphandle kwasekhaya Uma kungenzeka hlala endlini ugweme imigwaqo. Ngezikhathi zemvula enkulu. Imigwaqo igcina ingaphephile ngenxa yamanzi angazitholi izindawo zokugeleza/ukuchezuka.

Uma usuphikelele ekhaya kuyenzeka kuvele kuqubuke umhoshana noma umfula omncanyane okumele uyuwele ongazi ukuthi unamanzi agijima noma ashona kangakanani. Gwema ukuwela imihoshana nemifula enamanzi angaphezu kwamaqakala. Uma imvula ina kakhulu isikhathi eside idala amadamu ezindaweni eziphansi. Uma umuzi wakini wakhiwe endaweni ephansi kufanele ukhuphukele endaweni ephezulu ukugwema ukuminza

Kwesinye isikhathi imvula ivele ine kakhulu lapho ususemweni ubheke ekhaya noma emsebenzini. Uma imoto ingasalawuleki kodwa isilawulwa ngamanzi phuma ngokushesha uyiyeke imoto iguguleke yodwa. Isikhathi esiningi izulu liqala ngokuduma libe nemibani ngaphambi noma ngesikhathi sezimvula. Kubalulekile ukuthi ucishe ugesi noma izinto ezisebenza ngogesi. Nombani noma amanzi engawuqala umlilo uma sekuqhuma izinto zikagesi.

Abantu abafuye imfuyo bavamise ukwakhela imfuyo yabo indawo ephephile okungaba isibaya noma ihhoko. Lokhu kugcina izilwane ziphephile ezigebengwini. Uma unezilwane ezivalelwayo zikhulule uziqhubele endaweni ephephile. Uma imvula ina isikhathi eside kuyenzeka amanzi ahamba kogedasi abe maningi kakhulu agcine esengena endlini noma alimaze uphahla. Kubalulekile ukuba uwushiye umuzi wakho uma amanzi esemaningi kakhulu ngoba engayimukisa indlu noma idilike.

Noma izikhukhula kuyinto engenzeki njalo kodwa kubalulekile ukuba sazi izinto ekufanele sizenze ezimweni ezinje. Masingawathathi kancane amanzi.

[10]

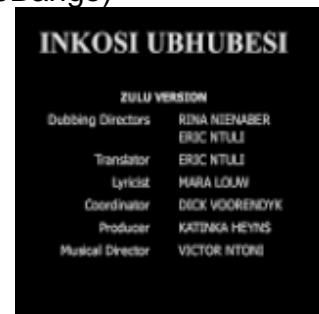
ISIQEPHU C**UMBUZO 3**

Bukisisa UMBHALO D bese uphendula imibuzo ezolandela.

UMBHALO D (Ofundwayo nobukwayo)**UMSHADO**

Abafundi bebanga lesi-9 banithulela imidlalo emifushane ebhalwe yaphinda yadlalwa yibo

- **Uzosisola wedwa** (Khumalo, Ndlovu noHlongwa)
- **Umshado wesivumelwano** -(Shandu, Madikizela, Ntshangase, Ngidi)
- **Umona kwaDumakude** (Ngobo, Dlamini noMthethwa)
- **Umshado wengxabano** (Vezi, Shezi, Sondezi, Luthuli, Mzobe, Mungwe, Zincume, noNene)
- **Imfihlo yenkosi** (Vilakazi, Mbili, Mhlongo, noNgcobo)
- **Indlela yenjabulo** (Mncube, Ngubane, Mantashe noBango)



Ungaphuthelwa imidlalo enhlobonhlobo ezobe ibukiswa:

Indawo: Hillcrest High School ehhlo

Usuku: 6, 7 no-8 Disemba 2022

Isikhathi : 17h00-19h00

Imali yokungena

Abadala: R30

Izingane/abafundi:R20

Amathikithi ayatholakala emnyango noma kothisha besiZulu.

3.1 Abafundi baliphi ibanga abahlanganise le midlalo? (1)

3.2 Lo mdlalo uzodlalwa izinsuku ezingaki? (1)

3.3 ?Yimuphi umdlalo onabادلali abaningi? (1)

3.4 Ngokucabanga kwakho kungani imali yokungena ingalingani? Chaza ngephuzu

ELILODWA. (2)

- 3.5 Kungani umbhali walesi sikhangiso esebenzise izithombe kulesi sikhangisi? (2)
- 3.6 Yimiphi imidlalo EMIBILI enezihloko ezicishe zifane? (2)
- 3.7 Yibuphi ubungozi OBUBILI obungadalwa ukudayiswa kwamathikithi emnyango? (2)
- 3.8 Ngokucabanga kwakho, kunamthelela muni ukuba nabadlali abayisibalo esincane eqenjini? (2)
- 3.9 Isithombe sokugcina esinamagama abadlali sivela maphakathi nomdlalo? Vuma noma uphike bese wesekele impendulo yakho. (2)

[15]

ISIQEPHU D**UMBUZO 4**

Fundisisa UMBHALO E bese uphendula imibuzo ezolandela.

UMBHALO E (Ofundwayo)

Hheyi bakwethu! Usuphelile njalo unyaka? Impela isikhathi sesidliwe yinja. Sekuzovela imiphumela kuwo wonke umuntu obesebenza nobefunda. Kuzocaca ukuthi bawulungiselele ngokufanele yini uZibandlela. Phela konke kuvela obala ngale **nyanga**. Alikho eligxumela elinye. Bazohlala obala labo ababedlala ngemali nangesikhathi. Abanye bazobe behleka bodwa sebethola amabhonasi abo. Kukhona abazothola imali abebeyonga unyaka wonke. Abafundi abazimisilele bazodlulela phambili. Kuneqembu elizivocavocayo ukuze libe nemizimba emihle ehambisana nalesi sikhathi. Izigebengu nazo azizibekile phansi ngalesi sikhathi. Amadolobha amakhulu agudle ulwandle agadwa kakhulu. Kufakwa amaphoyisa amaningi ngoba abantwana bayalahleka futhi bayantshontshwa kulezi zindawo. Amaphoyisa ahlale ethola izingane ezidukile azigcine. Izingane ezimukayo zidliwa izilwane eziyingozi zasolwandle.

- 4.1 Hlobo luni lophawu olusetshenziswe kulo musho olandelayo Hheyi bakwethu! (1)
- 4.2 Guqula leli bizo elilandelayo likhombwe ubuningi bese ulisebenzisa eshweni ozakhele wona. **Isikhathi** (2)
- 4.3 Le nyanga ebhalwe ngokunzima kulo musho olandelayo ingeyesingaki? Abantu bayawulungiselela **uZibandlela** (2)
- 4.4 Hlobo luni lwebizo elilandelayo. **amabhonasi**
- 4.5 Guqula amabizo abhalwe ngokunzima kule misho elandelayo abe isabizwana soqobo. Kufakwa **amaphoyisa** amaningi ngoba **abantwana** bayalahleka. (2)

- 4.6 Sebenzisa igama '**inyanga**' liveze umqondo owehlukile nosesiqeshini. (2)
- 4.7 Gcwalisa lo musho gezivumelwano ezifanele. Bhala umusho wonke.
Amabhonasi **-lo** nyaka mahle **-khulu**. (2)
- 4.8 Guqula lo musho olandelyo ukhombekile inkathi edlule.
Izingane zidliwa izilwane olwandle. (2)
- 4.9 Qala lo musho olandelayo ngegama elibhalwe ngokunzima.
Izingane zijabulela **ukhisimusi**. (2)
- 4.10 Hlobo luni locezu lwenkulamo olubhalwe ngokunzima kulo musho.
Kukhona abazothola imali abebeyonga unyaka **wonke**. (2)
- 4.11 Bhala umqondo ovezwa yilesi sakhi esibhalwe ngokugqamile kulo
musho olandelayo.
Amakhosi**kazi** amaningi asuke ehamba nabayeni bawo. (2)
- 4.12 Qedela lo musho olandelayo ngegama elifanele
Akukho ___ eligxumela elinye? (1)

[20]**ISAMBA:70**